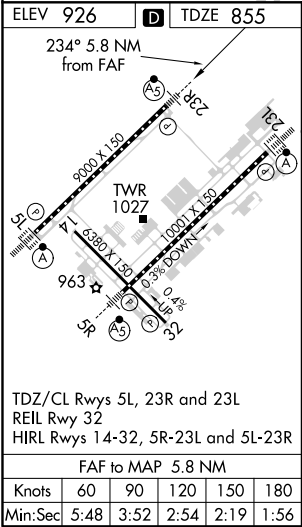
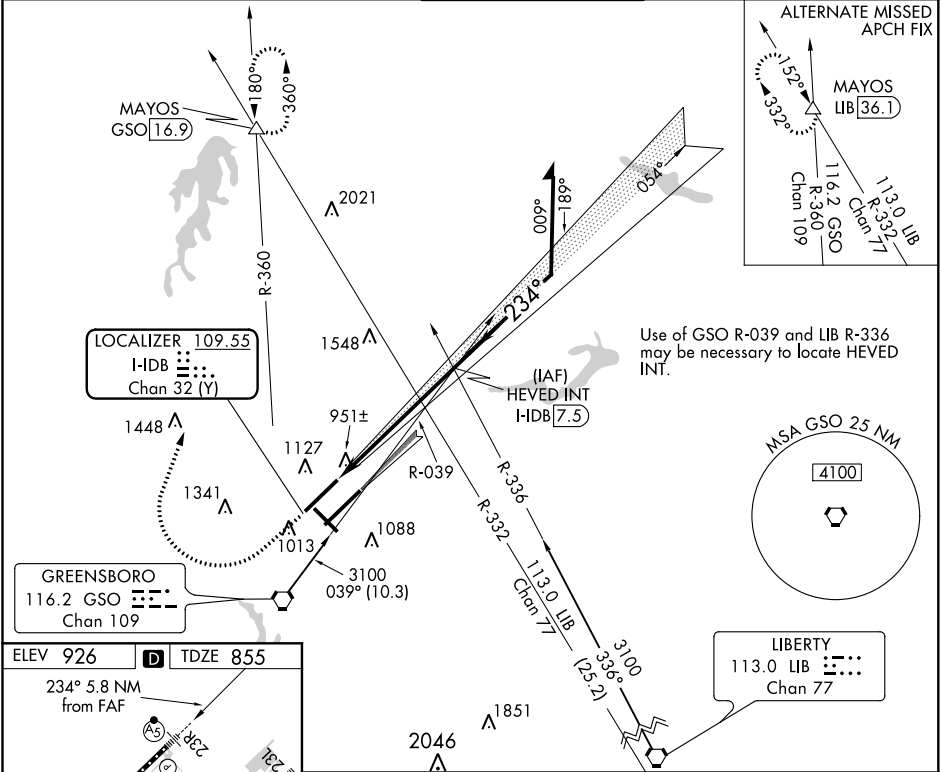


LOC/DME	I-DB	APP CRS	Rwy Idg	9000
<b>109.55</b>		<b>234°</b>	TDZE	<b>855</b>
Chan 32 (Y)			Apt Elev	<b>926</b>

ILS or LOC RWY 23R  
PIEDMONT TRIAD INTL (GSO)

<b>Simultaneous approach authorized with Rwy 23L.</b>	<b>MALSR</b> 	<b>MISSED APPROACH:</b> Climb to 1500 then climbing right turn to 3100 on heading 015° and GSO VORTAC R-360 to MAYOS INT/GSO 16.9 DME and hold.
---	------------------	---

D-ATIS <b>128.55</b>	GREENSBORO APP CON <b>124.35 269.225</b> (250°-049°) <b>126.6 327.075</b> (050°-249°)	GREENSBORO TOWER <b>119.1 290.325</b>	GND CON <b>121.9 348.6</b>	CLNC DEL <b>121.75</b>
-------------------------	---	--	-------------------------------	---------------------------



1500	3100	GSO R-360	MAYOS	HEVED INT I-DB 7.5	Remain within 10 NM
VGSi and ILS glidepath not coincident (VGSi Angle 3.00/TCH 69°)					
CATEGORY					
A					
B					
C					
D					
S-ILS 23R					
1055/18 200 (200-1/2)					
S-LOC 23R					
1240/24 385 (400-1/2)					
1240/40 385 (400-3/4)					
FAF to MAP 5.8 NM					
Knots	60	90	120	150	180
Min:Sec	5:48	3:52	2:54	2:19	1:56
CIRCLING					
1440-1 514 (600-1)					
1700-2 1/4 774 (800-2 1/4)					
1700-2 1/2 774 (800-2 1/2)					

SE-2, 03 DEC 2020 to 31 DEC 2020

SE-2, 03 DEC 2020 to 31 DEC 2020