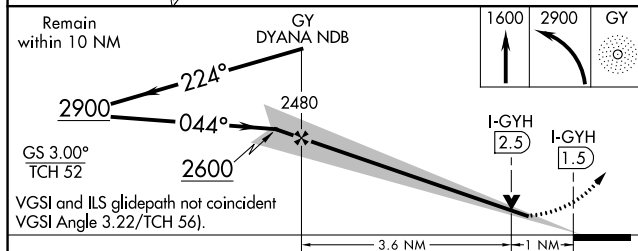
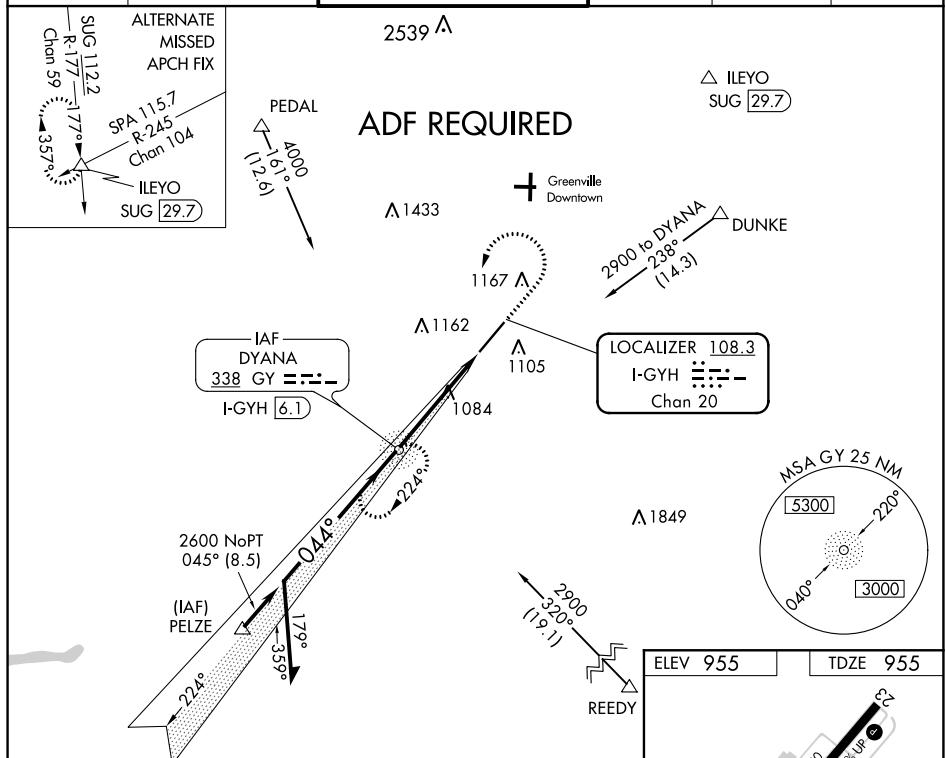


ILS or LOC RWY 5
DONALDSON FIELD (GYH)

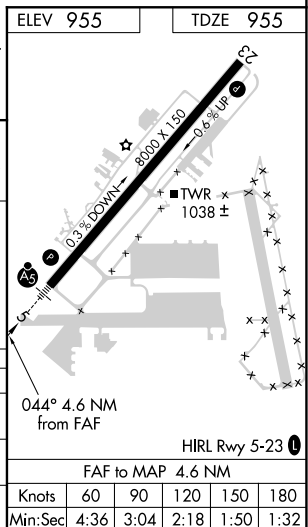
MALSR

MISSED APPROACH: Climb to 1600 then climbing left turn to 2900 direct DYANA NDB and hold, continue climb-in-hold to 2900.

AWOS-3 127.325	GREER APP CON ★ 118.8 270.275	DONALDSON TOWER ★ 133.325 (CTAF) 0 269.25	GND CON 121.4	CLNC DEL 121.4	UNICOM 122.7
-------------------	----------------------------------	--	------------------	-------------------	-----------------



CATEGORY	A	B	C	D
S-ILS 5	1155- ¹ / ₂ 200 (200- ¹ / ₂)			
S-LOC 5	1340- ¹ / ₂ 385 (400- ¹ / ₂)			1340- ³ / ₄ 385 (400- ³ / ₄)
CIRCLING	1420-1 465 (500-1)		1480-1 ¹ / ₂ 525 (600-1 ¹ / ₂)	1520-2 565 (600-2)



SE-2, 03 DEC 2020 to 31 DEC 2020