

WAAS CH 78239 W09A	APP CRS 092°	Rwy Idg TDZE Apt Elev	5001 631 631
--	------------------------	-----------------------------	---

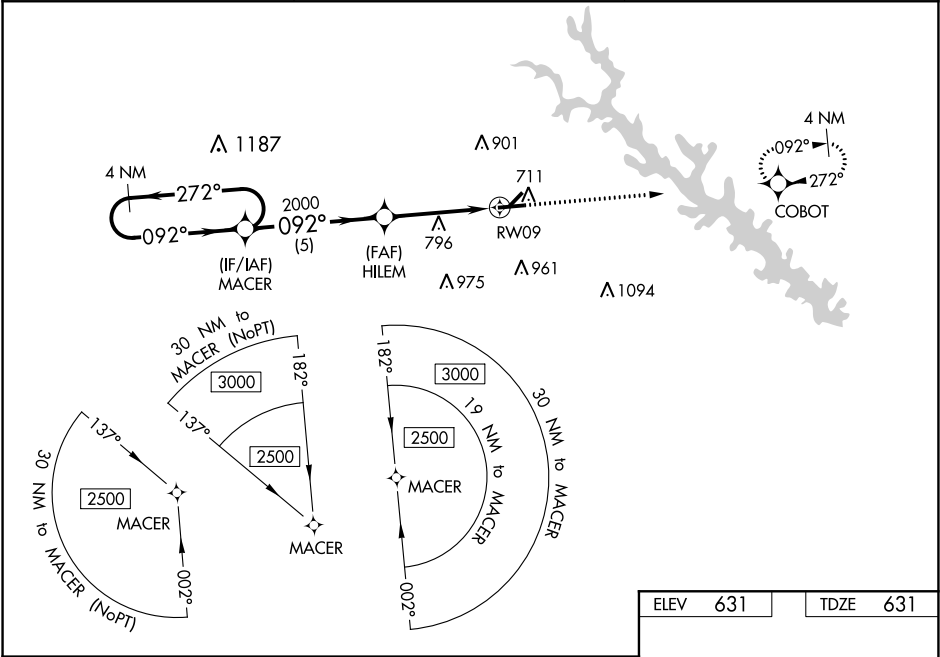
RNAV (GPS) RWY 9

GREENWOOD COUNTY (GRD)

For uncompensated Baro-VNAV systems, LNAV/VNAV NA below -10°C (14°F) or above 54°C (130°F). Baro-VNAV and VDP NA when using Laurens altimeter setting. DME/DME RNP-0.3 NA. Circling Rwy 5, 23 NA at night. When local altimeter setting not received, use Laurens altimeter setting and increase LPV DA to 991 feet and visibility 1/8 SM all Cats, LNAV/VNAV DA to 1070 feet and visibility 1/4 SM all Cats, increase all MDA 60 feet, and LNAV Cat C/D visibility 1/8 SM and Circling Cat C/D visibility 1/4 SM. Rwy 9 helicopter visibility reduction below 3/4 SM NA.

MISSED APPROACH:
Climb to 2500 direct COBOT and hold.

ASOS 121.125	GREER APP CON★ 120.6 350.2	UNICOM 122.975 (CTAF) 0
------------------------	--------------------------------------	-----------------------------------



4 NM Holding Pattern		MACER	HILEM	RWY 9	COBOT
2500		2000	2000	2000	2500
GP 3.00° TCH 55		092°	092°	092°	092°
5 NM		3 NM	1.2 NM	1.2 NM	1.2 NM
CATEGORY	A	B	C	D	
LPV DA	938-1 307 (400-1)				
LNAV/VNAV DA	1017-1 386 (400-1 1/4)				
LNAV MDA	1060-1 429 (500-1) 1060-1 429 (500-1 1/4)				
CIRCLING	1080-1 449 (500-1) 1100-1 469 (500-1) 1320-2 689 (700-2) 1340-2 709 (800-2 1/4)				