

VORTAC GRD

115.5

Chan 102

APP CRS

080°

Rwy Idg

5001

TDZE

631

Apt Elev

631

VOR RWY 9

GREENWOOD COUNTY (GRD)

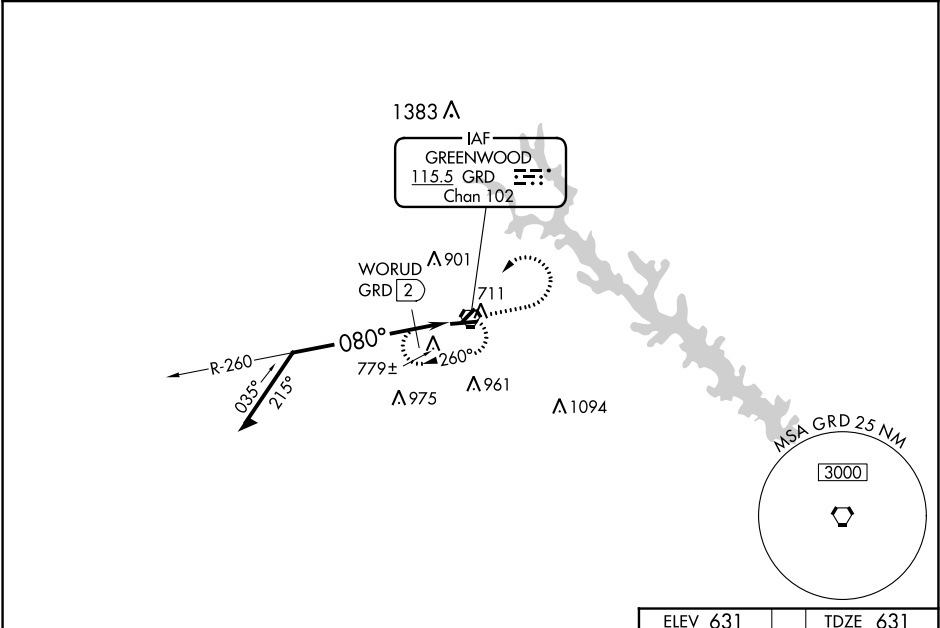
⚠

⚠

Circling Rwy 5, 23 NA at night. When local altimeter setting not received, use Laurens altimeter setting: increase all MDA 60 feet and Cats C and D visibility ¼ SM. Rwy 9 helicopter visibility reduction below ¾ SM NA.

MISSED APPROACH: Climb to 1600 then climbing left turn to 2300 direct GRD VORTAC and hold.

ASOS 121.125	GREER APP CON ★ 120.6 350.2	UNICOM 122.975 (CTAF) ①
-----------------	--------------------------------	----------------------------



Remain within 10 NM

GRD VORTAC

2300

260°

080°

WORUD GRD 2

3.00°

TCH 55

*1100

2 NM

1600

2300

GRD

*1160 when using Laurens altimeter setting.

ELEV 631

TDZE 631

080° to GRD VORTAC

3600 X 60

5001 X 100

690

27

CATEGORY	A	B	C	D
S-9	1100-1	469 (500-1)	1100-1⅜	469 (500-1⅜)
CIRCLING	1100-1	469 (500-1)	1320-2 689 (700-2)	1340-2¼ 709 (800-2¼)
WORUD FIX MINIMUMS (DME REQUIRED)				
S-9	1040-1	409 (500-1)	1040-1⅛	409 (500-1⅛)
CIRCLING	1080-1 449 (500-1)	1100-1 469 (500-1)	1320-2 689 (700-2)	1340-2¼ 709 (800-2¼)

MIRL Rwy 9-27 ①
REIL Rwy 9 and 27 ①