

SUMTER, SOUTH CAROLINA

HI-ILS or LOC Z RWY 22R

LOC I-JWU	APCH CRS	Rwy Idg	22R	22L
<u>108.7</u>	<b>223°</b>	<b>10,014</b>	<b>8014</b>	
		TDZE	<b>240</b>	<b>235</b>
		Arpt Elev	<b>241</b>	<b>241</b>

JAL-409 [USAF]

SHAW AFB (KSSC)

RADAR or DME Required.

**T** \* When ALS inop, increase RVR to 40 and vis to  $\frac{3}{4}$  mile.

\*\* When ALS inop, increase vis to 1 ¼ miles.

ALSF-1



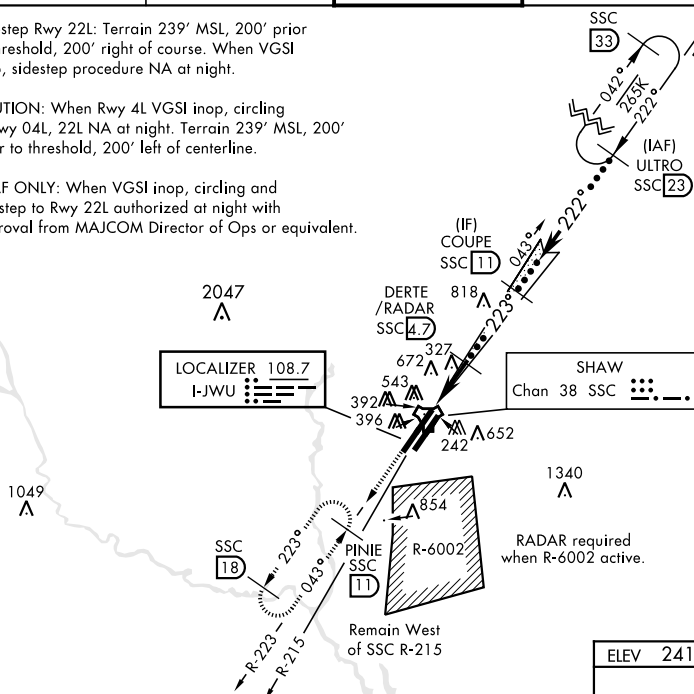
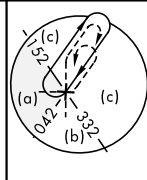
**MISSED APPROACH:** Climbing to 2000, intercept SSC TACAN R-223 to PINIE and hold.

ATIS ★	SHAW APP CON	SHAW TOWER ★	GND CON	CLNC DEL
132.125 270.1	125.4 318.1	126.65 254.25	126.1 275.8	126.1 275.8

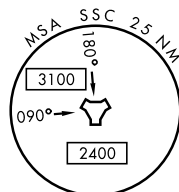
Sidestep Rwy 22L: Terrain 239' MSL, 200' prior to threshold, 200' right of course. When VGSI inop, sidestep procedure NA at night.

**CAUTION:** When Rwy 4L VGSI inop, circling to Rwy 04L, 22L NA at night. Terrain 239' MSL, 200' prior to threshold, 200' left of centerline.

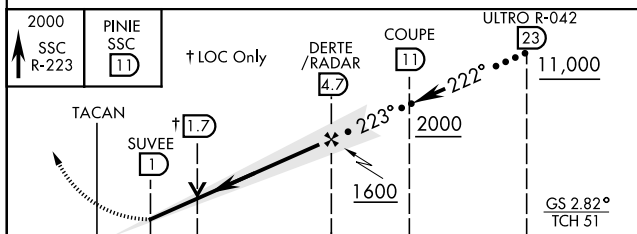
USAF ONLY: When VGSI inop, circling and sidestep to Rwy 22L authorized at night with approval from MAJCOM Director of Ops or equivalent.



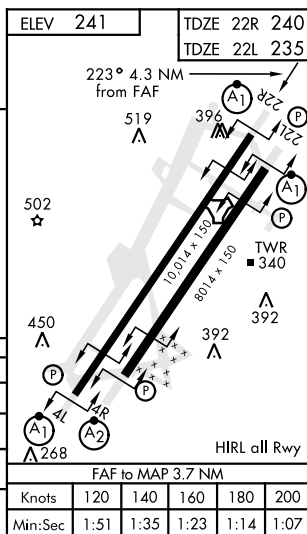
RADAR required  
when R-6002 active.



EMERG SAFE ALT 100 NM 3800



	6 NM	9.7 NM	
CATEGORY	C	D	E
S-ILS 22R *	440/24	200 (200-½)	
S-LOC 22R **	660/40	420 (500-¾)	
SIDESTEP ** 22L	660-1¼	425 (500-1¼)	
CIRCLING	1000-2¼ 759 (800-2¼)	1000-2½ 759 (800-2½)	1000-2¾ 759 (800-2¾)



SUMTER, SOUTH CAROLINA

33°58'N-80°28'W

SHAW AFB (KSSC)

Amdt 1 10OCT19

HI-ILS or LOC Z RWY 22R

SE-2, 03 DEC 2020 to 31 DEC 2020