

TACAN	SSC	APCH CRS	Rwy Idg	4L	4R
Chan	38	043°	TDZE	10,014	8014
			Arprt Elev	241	241

JAL-409 [USAF]

SHAW AFB (KSSC)

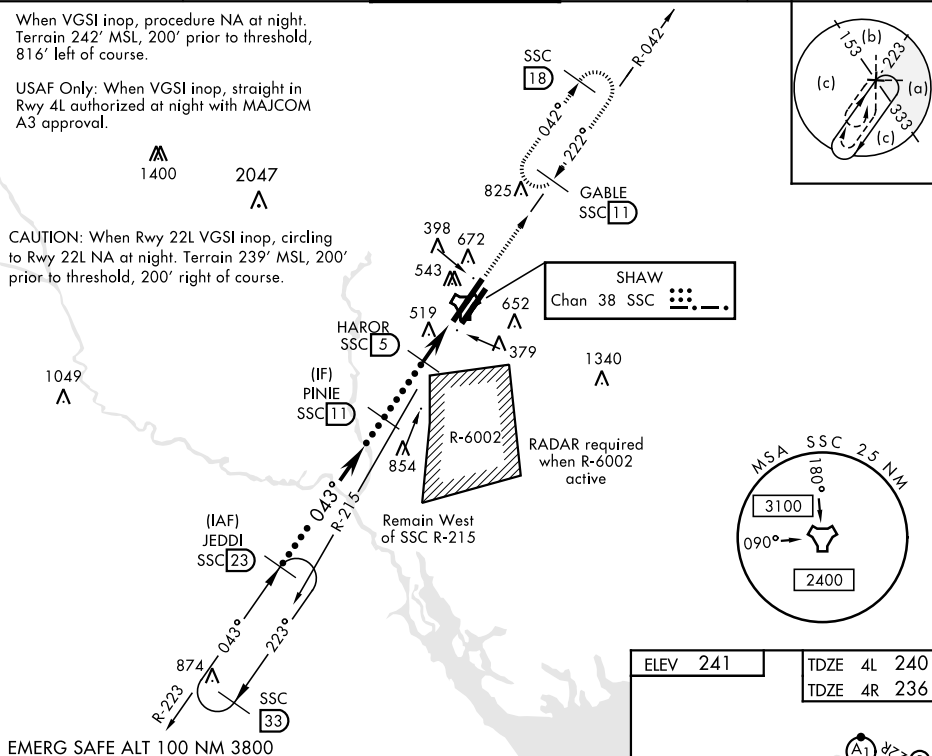
<p>* When ALS inop, increase vis to 1 ½ miles.</p>	<p>ALSF-1</p>	<p>MISSED APPROACH: Climbing to 2000, intercept SSC TACAN R-042 to GABLE and hold.</p>
--	---------------	--

<p>ATIS ★</p> <p>132.125 270.1</p>	<p>SHAW APP CON</p> <p>125.4 318.1</p>	<p>SHAW TOWER ★</p> <p>126.65 254.25</p>	<p>GND CON</p> <p>126.1 275.8</p>	<p>CLNC DEL</p> <p>126.1 275.8</p>
------------------------------------	--	--	-----------------------------------	------------------------------------

When VGSI inop, procedure NA at night. Terrain 242' MSL, 200' prior to threshold, 816' left of course.

USAF Only: When VGSI inop, straight in Rwy 4L authorized at night with MAJCOM A3 approval.

CAUTION: When Rwy 22L VGSI inop, circling to Rwy 22L NA at night. Terrain 239' MSL, 200' prior to threshold, 200' right of course.



EMERG SAFE ALT 100 NM 3800

JEDDI R-223	PINIE	HAROR	TACAN
11,000	2000	1400	2400
043°	043°	043°	043°
2.82°			
TCH 36			
		3.2 NM	.6 NM
CATEGORY	C	D	E
S-4L *	800/60	560 (600-1½)	
SIDESTEP 4R *	800-1½	564 (600-1½)	
CIRCLING	1000-2¼ 759 (800-2¼)	1000-2½ 759 (800-2½)	1000-2¾ 759 (800-2¾)

