

SUMTER, SOUTH CAROLINA

ILS or LOC Y RWY 4L

LOC I-SSC		APCH CRS		<div> <div>4L</div> <div>4R</div> </div> <div> <div>Rwy Idg</div> <div>10,014</div> <div>8014</div> </div> <div> <div>TDZE</div> <div>240</div> <div>236</div> </div> <div> <div>Arpt Elev</div> <div>241</div> <div>241</div> </div>		AL-409 [USAF]	SHAW AFB (KSSC)
<u>110.1</u>		<u>043°</u>					

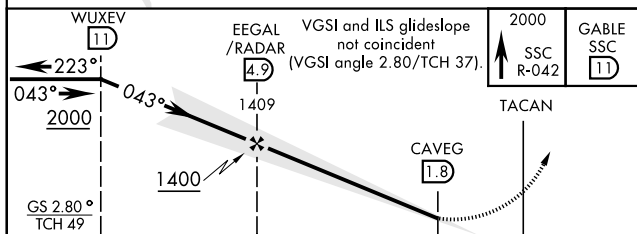
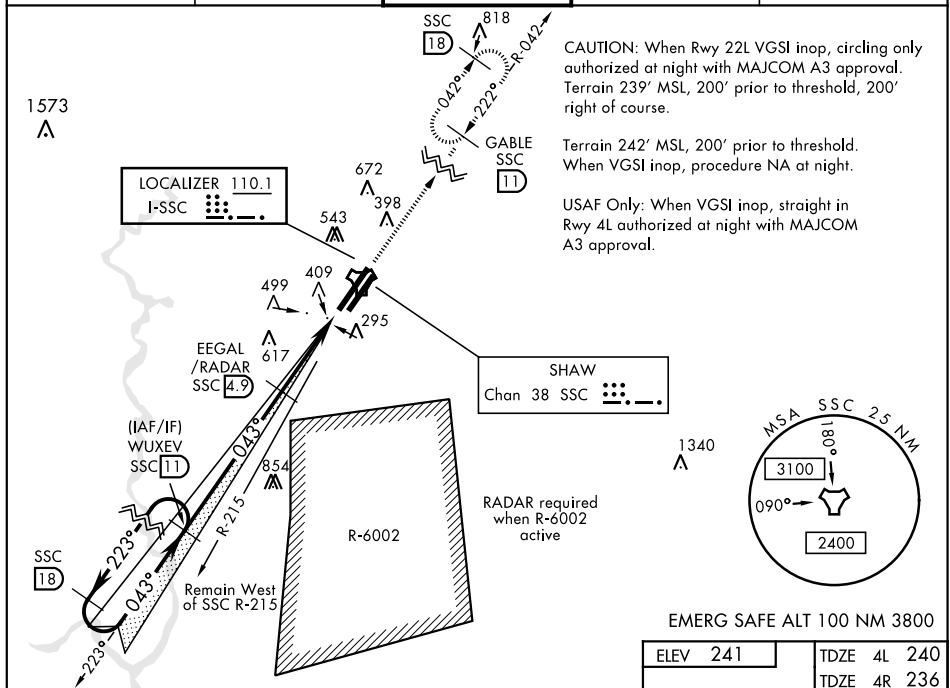
RADAR or DME Required.

T * When ALS inop, increase CAT AB RVR to 55 and vis to 1 mile, CAT CDE vis to 1 $\frac{5}{8}$ miles.

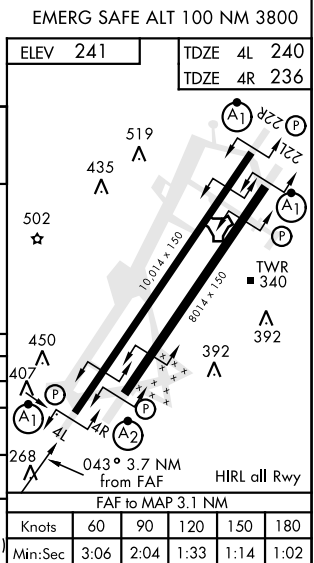
ALSF-1

MISSED APPROACH: Climbing to 2000, intercept
SSC TACAN R-042 to GABLE and hold.

ATIS ★	SHAW APP CON	SHAW TOWER ★	GND CON	CLNC DEL
132.125 270.1	125.4 318.1	126.65 254.25	126.1 275.8	126.1 275.8



CATEGORY		A	B	C	D	E
S-ILS 4L		490/50		250	(300-1)	
S-LOC 4L *		780/50	540 (600-1)	780/55	540	(600-1)
SIDESTEP 4R *		780/50	544 (600-¾)	780-1⅜	544	(600-1⅜)
C CIRCLING	820-1	880-1	1000-2¼	1000-2½	1000-2¾	
	579 (600-1)	639 (700-1)	759 (800-2¼)	759 (800-2½)	759 (800-2¾)	



SUMTER, SOUTH CAROLINA

33°58'N-80°28'W

SHAW AFB (KSSC)

Amdt 1 10OCT19

ILS or LOC Y RWY 4L

SE-2, 03 DEC 2020 to 31 DEC 2020