

LOC I-GMX 111.55	APP CRS 238°	Rwy Idg 8016 TDZE 26 Apt Elev 32	ILS Y RWY 24 (SA CAT I & II) WILMINGTON INTL (ILM)
----------------------------	------------------------	---	--

ADF required. SA CAT I: Requires specific OPSPEC, MSPEC, or LOA approval and use of HUD to DH. SA CAT II: Reduced lighting: requires specific OPSPEC, MSPEC, or LOA approval and use of autoland or HUD to touchdown. Procedure NA when tower closed.

ASR

MALSR

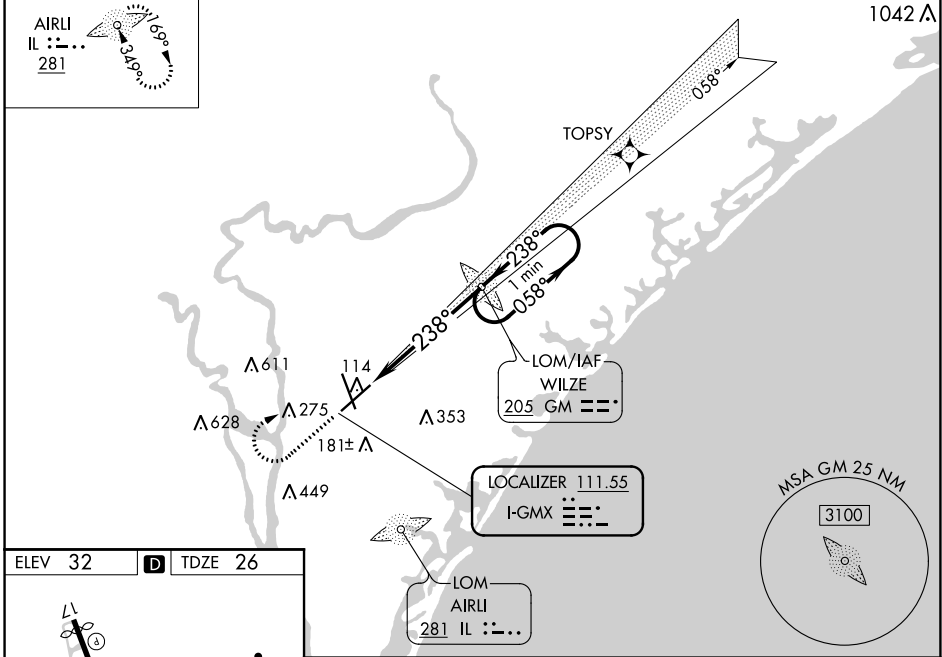
MISSED APPROACH: Climb to 500 then climbing right turn to 1800 direct WILZE LOM and hold.

ATIS 124.975	WILMINGTON APP CON ★ 118.25 284.65 (164°-343°) 135.75 317.425 (344°-163°)	WILMINGTON TOWER ★ 119.9 (CTAF) 0 239.3	GND CON 121.9 348.6	UNICOM 122.95
------------------------	---	--	-------------------------------	-------------------------

ALTERNATE MISSED
APCH FIX

AIRLI
IL : - . .
281

RNAV 1-GPS or RADAR REQUIRED



ELEV 32

D

TDZE 26

HIRL Rwy 17-35

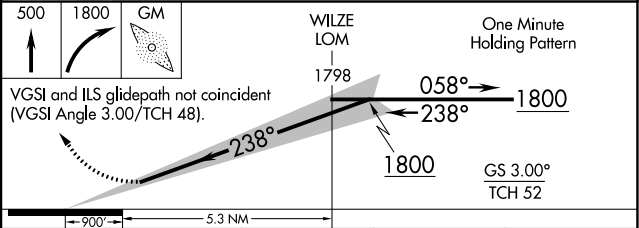
HIRL Rwy 6-24

REIL Rwy 17

REIL Rwy 6

FAF to MAP 5.3 NM

Knots	60	90	120	150	180
Min:Sec	5:18	3:32	2:39	2:07	1:46



CATEGORY	A	B	C	D
S-ILS 24	SA CAT I	RA 151/14	150 DA 176	
S-ILS 24	SA CAT II	RA 108/12	100 DA 126	

SA CATEGORY I & II ILS SPECIAL AIRCREW
& AIRCRAFT CERTIFICATION REQUIRED