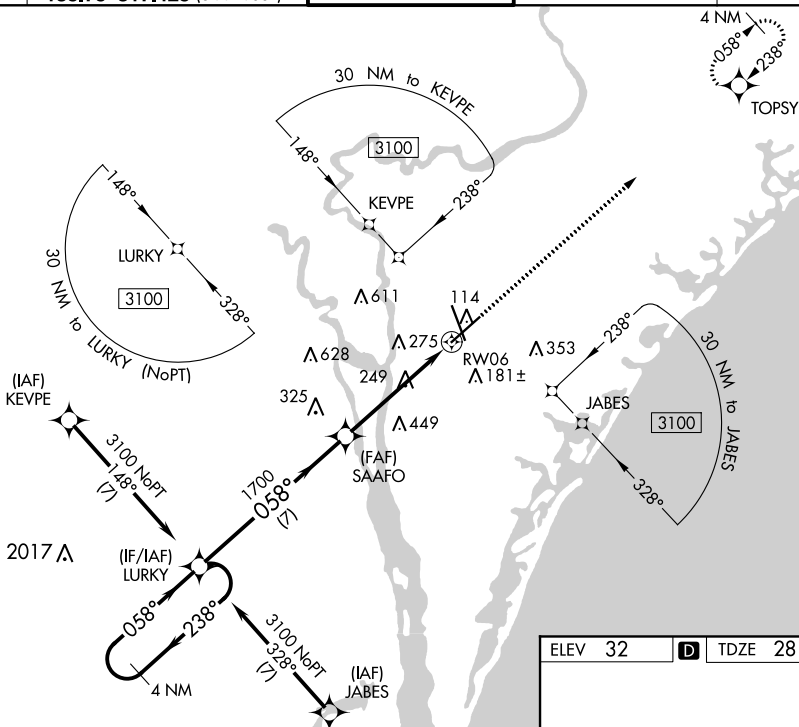


19115

RNAV (GPS) RWY 6  
WILMINGTON INTL (ILM)

**MISSED APPROACH:** Climb to 2000 direct TOPSY and hold.

UNICOM  
122.95

4 NM Holding Pattern

LURKY

VGS and RNAV glidepath not coincident (VGS Angle 3.00/TCH 57).

2000

TOPSY

\*LNAV only.

3100

238°

058°

058°

1700

1700

7 NM

3.8 NM

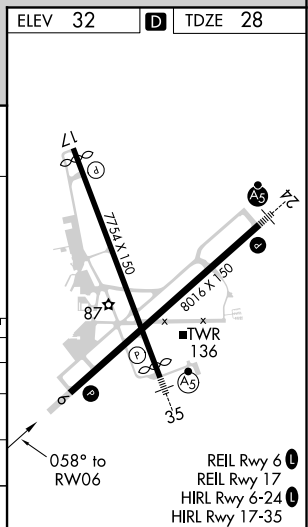
1.3 NM

GP 3.00° TCH 60

\*1.3 NM to RW06

RW06

CATEGORY	A	B	C	D
LPV DA	228/40 200 (200-¾)			
RNAV/ VNAV DA	434/60 406 (500-1¼)			
RNAV MDA	500/55 472 (500-1)		500-1⅜	472 (500-1⅜)
<b>C</b> CIRCLING	560-1	528 (600-1)	720-2 688 (700-2)	920-3 888 (900-3)



WILMINGTON INTL (ILM)  
RNAV (GPS) RWY 6

SE-2, 03 DEC 2020 to 31 DEC 2020