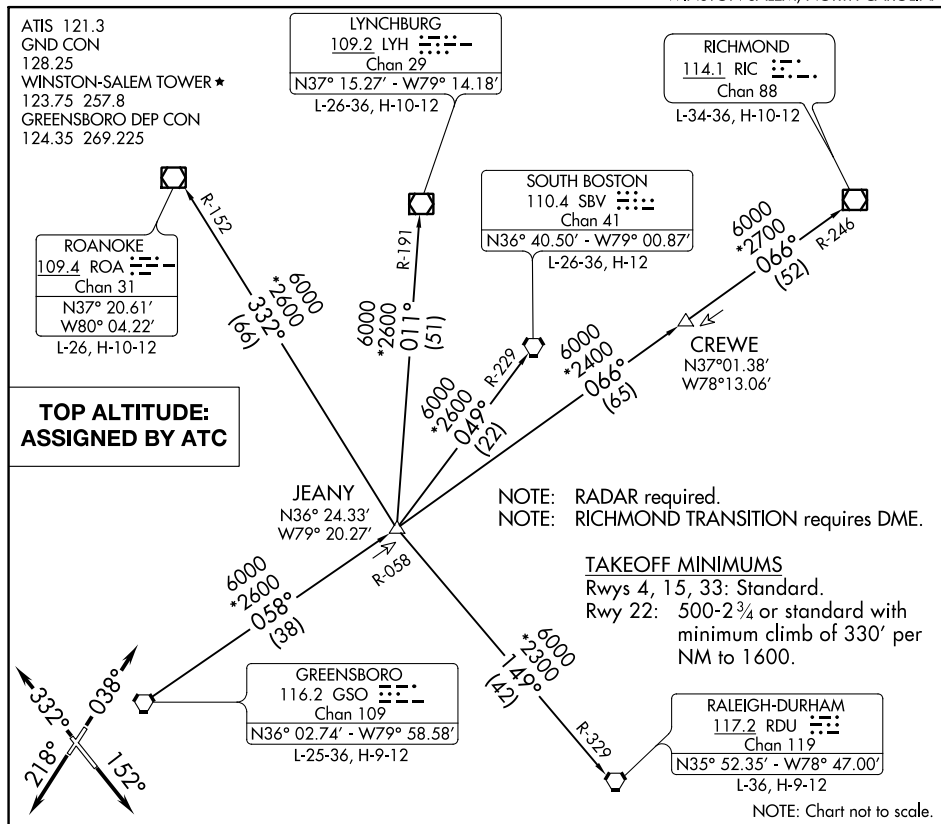


QUAKER SEVEN DEPARTURE

SMITH REYNOLDS (INT)
WINSTON-SALEM, NORTH CAROLINA

DEPARTURE ROUTE DESCRIPTION

TAKEOFF RUNWAY 4: Climb heading 038°, thence. . .

TAKEOFF RUNWAY 15: Climb heading 152°, thence. . .

TAKEOFF RUNWAY 22: Climb heading 218°, thence. . .

TAKEOFF RUNWAY 33: Climb heading 332°, thence. . .

. . . maintain altitude assigned by ATC. RADAR vectors will be provided to intercept assigned radial associated with the issued transition, or if no transition assigned, RADAR vectors will be provided to the appropriate fix. Expect requested altitude/flight level 10 minutes after departure.

LYNCHBURG TRANSITION (QUAK7.LYH): From over GSO VORTAC on GSO R-058 to JEANY INT then on LYH R-191 to LYH VOR/DME.

RALEIGH/DURHAM TRANSITION (QUAK7.RDU): From over GSO VORTAC on GSO R-058 to JEANY INT then on RDU R-329 to RDU VORTAC.

RICHMOND TRANSITION (QUAK7.RIC): From over GSO VORTAC on GSO R-058 to JEANY INT then on GSO R-058 and RIC R-246 to RIC VOR/DME.

ROANOKE TRANSITION (QUAK7.ROA): From over GSO VORTAC on GSO R-058 to JEANY INT then on ROA R-152 to ROA VOR/DME.

SOUTH BOSTON TRANSITION (QUAK7.SBV): From over GSO VORTAC on GSO R-058 to JEANY INT then on SBV R-229 to SBV VORTAC.

QUAKER SEVEN DEPARTURE

(QUAK7.GSO) 03JAN19

WINSTON-SALEM, NORTH CAROLINA
SMITH REYNOLDS (INT)