

WAAS CH 82011 W33A	APP CRS 332°	Rwy Idg 6655 TDZE 941 Apt Elev 969
--	------------------------	---

RNAV (GPS) RWY 33
SMITH REYNOLDS (INT)

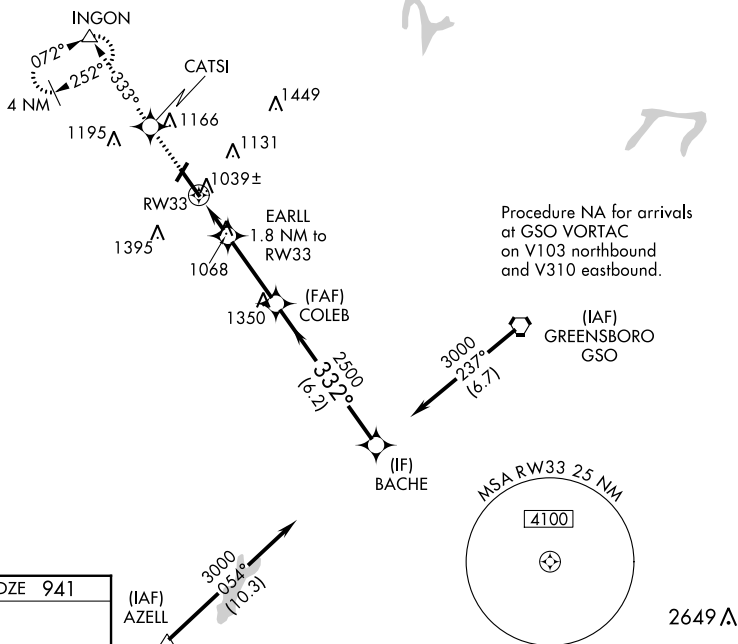
V
A For inoperative MALSRS, when using Piedmont Triad Intl altimeter setting, increase LPV all Cts visibility to 1 mile. Baro-VNAV NA when using Piedmont Triad Intl altimeter setting. For uncompensated Baro-VNAV systems, LNAV/VNAV NA below -16°C (4°F) or above 47°C (116°F). DME/DME RNP-0.3 NA. When local altimeter setting not received, use Piedmont Triad Intl altimeter setting and increase all DA 39 feet, and all MDA 40 feet, increase LNAV/VNAV all Cts and Circling Cts D visibility ¼ mile. Circling Rwy 4, 22 NA at night. **RVR 1800 authorized with use of FD or AP or HUD to DA, NA when using Piedmont Triad Intl altimeter setting.

MALSR

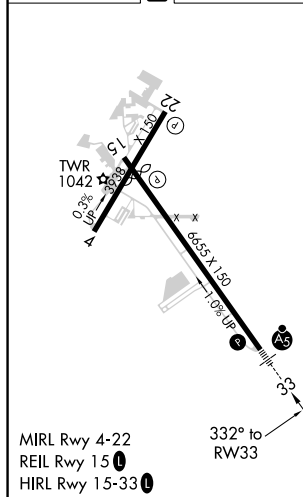


MISSED APPROACH:
Climb to 3500 direct
CATSI and on 333°
track to INGON and
hold, continue
climb-in-hold to 3500.

ATIS 121.3	GREENSBORO APP CON 124.35 269.225	WINSTON-SALEM TOWER ★ 123.75 (CTAF) 0 257.8	GND CON 128.25	UNICOM 122.95
---------------	--------------------------------------	--	-------------------	------------------



ELEV 969	D	TDZE 941
----------	----------	----------



3500 ↑	CATSI ✦	fr 333° △				
*LNAV only.			<p>EARLL 1.8 NM to RW33</p> <p>COLEB</p> <p>BACHE</p> <p>3000</p> <p>332°</p> <p>2500</p> <p>*1520</p> <p>1.8 NM</p> <p>3 NM</p> <p>6.2 NM</p> <p>Procedure Turn NA</p> <p>GP 3.00° TCH 57'</p>			
CATEGORY		A	B	C	D	
LPV	DA**	1141/24		200 (200-½)		
LNAV/ VNAV	DA	1407/60		466 (500-1¼)		
LNAV	MDA	1380/24 439 (500-½)		1380/40 439 (500-¾)	1380/50 439 (500-1)	
CIRCLING		1480-1 511 (600-1)	1580-1 611 (700-1)	1580-1¾ 611 (700-1¾)	1740-2½ 771 (800-2½)	