

HI-TACAN Z RWY 32L

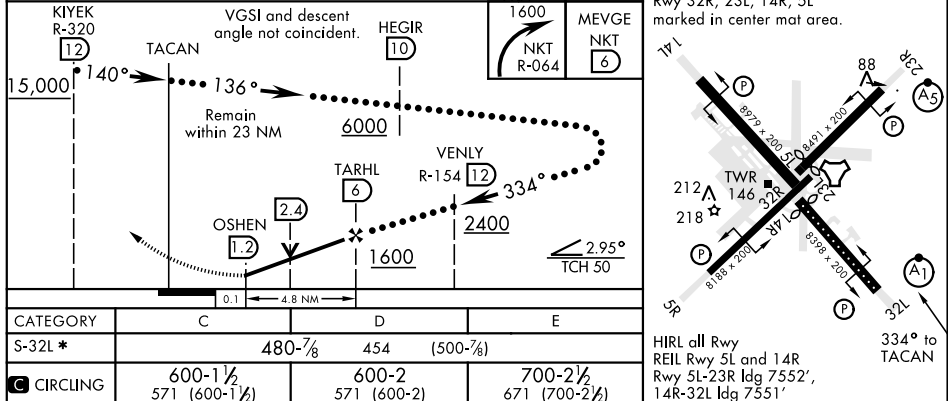
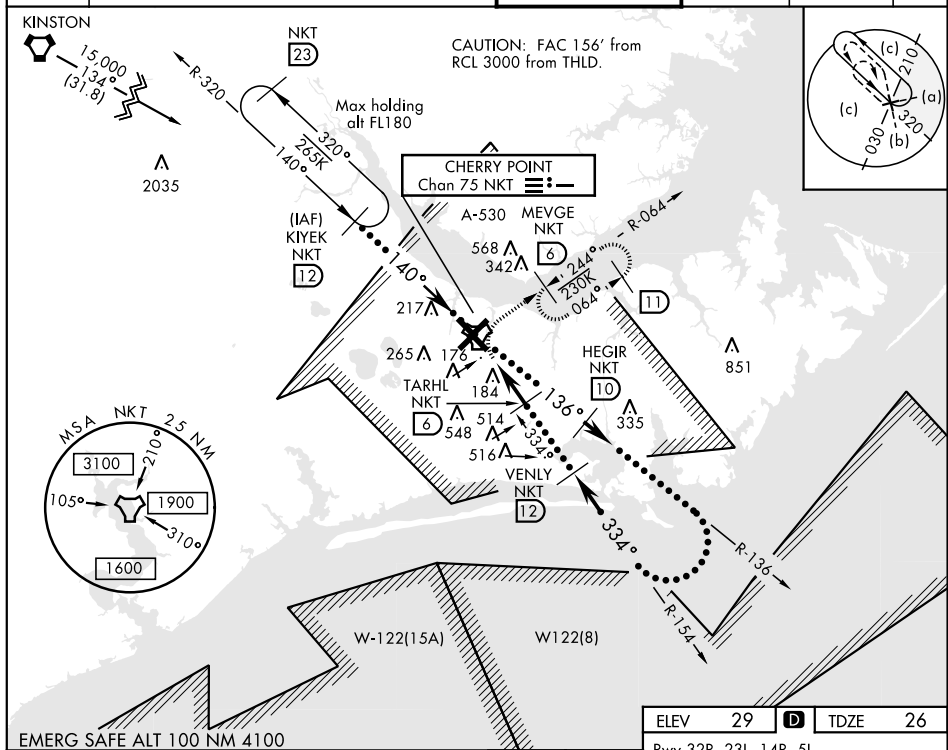
TACAN NKT Chan 75	APCH CRS 334°	Rwy Idg TDZE Arpt Elev 7551 26 29	JAL-471 [USN]	CHERRY POINT MCAS (CUNNINGHAM FLD) (KNKT)
-----------------------------	-------------------------	--	---------------	---

▼ * When ALS inop, increase vis to 1½ miles.

ALSF-1
(A1)

MISSED APPROACH: Climbing right turn to 1600
direct MEVGE and hold.

ATIS 127.475 244.875	CHERRY POINT APP CON (E) 119.75 360.775 (abv 2600') (E) 132.575 299.6 (at/blw 2600') (W) 119.35 377.175 (N) 124.1 268.7	CHERRY POINT TOWER 121.3 340.2	GND CON 128.625 239.025	CLNC DEL 125.95 316.125	ASR/ PAR
--	--	---	---	---	-------------



HI-TACAN Z RWY 32L