
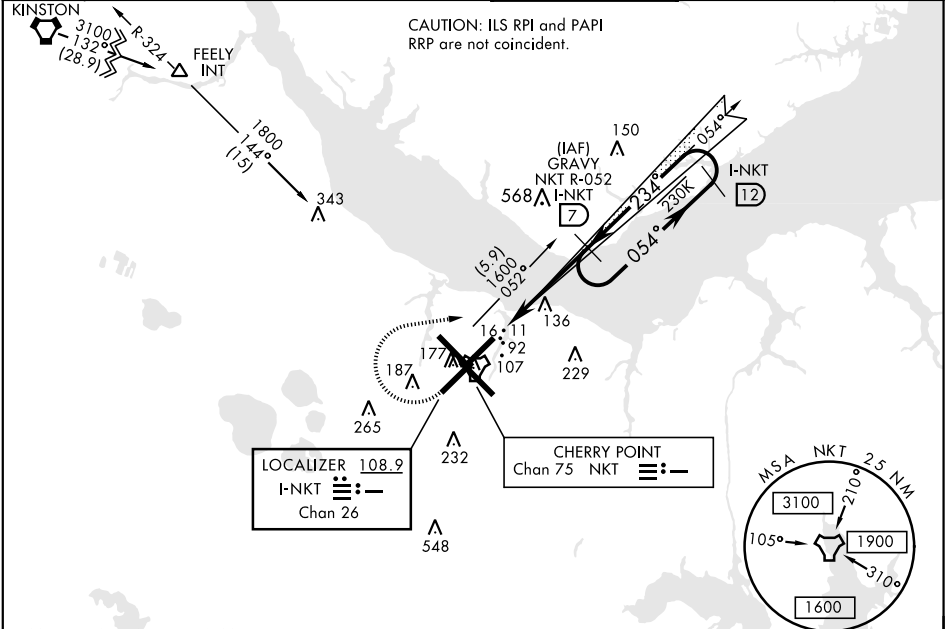


CHERRY POINT, NORTH CAROLINA

ILS or LOC/DME RWY 23R

LOC/DME I-NKT <b>108.9</b> Chan <b>26</b>		APCH CRS <b>234°</b>	Rwy Idg <b>7552</b> TDZE <b>23</b> Arprt Elev <b>29</b>	AL-471 [USN]	CHERRY POINT MCAS (CUNNINGHAM FLD) (KNKT)		
TACAN Required ▼ * When ALS inop, increase vis to ¾ mile. ** When ALS inop, increase vis to 1 mile.				MALSR 	MISSED APPROACH: Climb to 500, then climbing right turn to 2600 via NKT TACAN R-052 to GRAYV and hold. Continue climb in hold.		
ATIS <b>127.475</b> <b>244.875</b>	CHERRY POINT APP CON (E) <b>119.75 360.775</b> (abv 2600') (E) <b>132.575 299.6</b> (at/blw 2600') (W) <b>119.35 377.175 (N) 124.1 268.7</b>			CHERRY POINT TOWER <b>121.3 340.2</b>	GND CON <b>128.625</b> <b>239.025</b>	CLNC DEL <b>125.95</b> <b>316.125</b>	ASR/ PAR



EMERG SAFE ALT 100 NM 4100

500  
↑

2600  
NKT  
R-052

GRAYV  
NKT  
7

GRAYV  
NKT R-052  
I-NKT  
7

1585

054°

234°

1600

1600

GS 3.00°  
TCH 53

I-NKT DME

PEPAE  
I-NKT  
2.7

I-NKT  
3.3

234°

0.5

4.3 NM

CATEGORY	A	B	C	D
S-ILS 23R*	223-½		200	(200-½)
S-LOC 23R**	400-½	377 (400-½)	400-5/8	377 (400-5/8)
CIRCLING	580-1	551 (600-1)	600-1½ 571 (600-1½)	600-2 571 (600-2)

ELEV 29

TDZE 23

Rwy 32R, 23L, 14R, 5L 234° 4.8 NM marked in center mat area. from FAF

HIRL all Rwy  
REIL Rwy 5L and 14R  
Rwy 5L-23R Idg 7551',  
14R-32L Idg 7551'

FAF to MAP 4.3 NM

Knots	60	90	120	150	180
Min:Sec	4:18	2:52	2:09	1:43	1:26

CHERRY POINT, NORTH CAROLINA 34° 54' N-76° 53' W CHERRY POINT MCAS (CUNNINGHAM FLD) (KNKT)

Amtd 4 10SEP20

ILS or LOC/DME RWY 23R

SE-2, 03 DEC 2020 to 31 DEC 2020

SE-2, 03 DEC 2020 to 31 DEC 2020