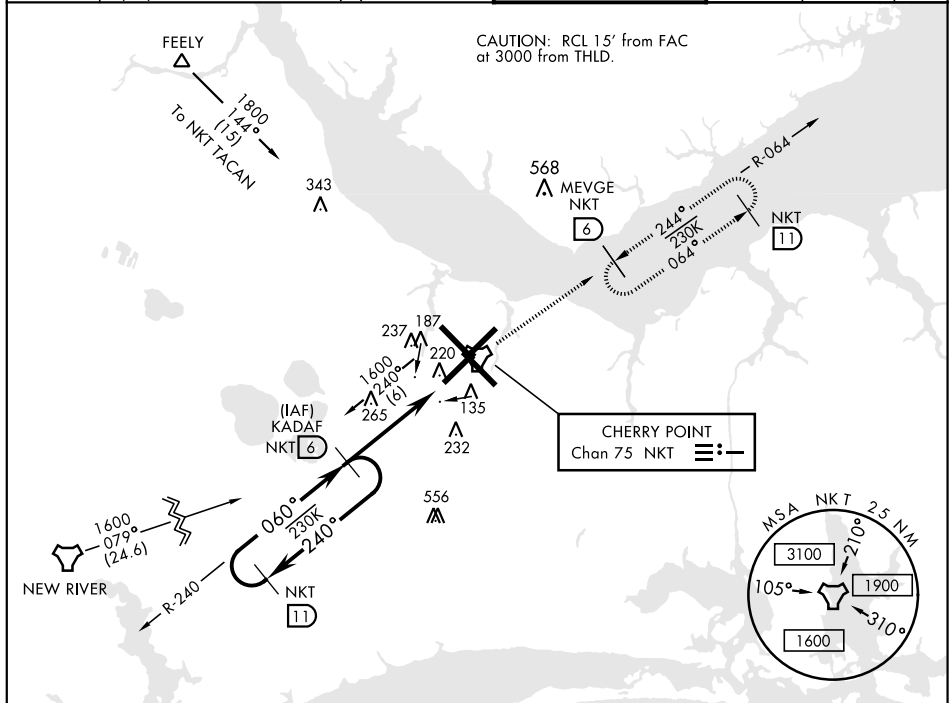


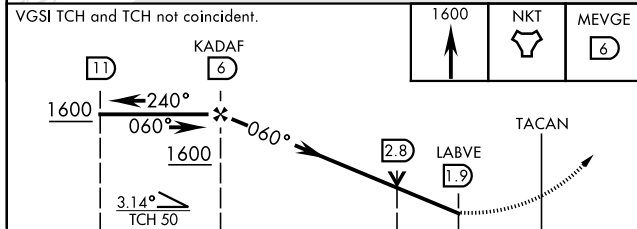
TACAN RWY 5R


TACAN NKT Chan 75		APCH CRS 060°		Rwy Idg 8188 TDZE 27 Arpt Elev 29		AL-471 [USN] CHERRY POINT MCAS (CUNNINGHAM FLD) (KNKT)				
<div>▼</div>						MISSED APPROACH: Climb to 1600 direct NKT TACAN, then direct MEVGE and hold.				
ATIS		CHERRY POINT APP CON				CHERRY POINT TOWER		GND CON	CLNC DEL	ASR/ PAR
127.475	(E)	119.75	360.775	(obv 2600')				128.625	125.95	
244.875	(E)	132.575	299.6	(at/blw 2600')			121.3 340.2	239.025	316.125	
	(W)	119.35	377.175	(N)	124.1 268.7					

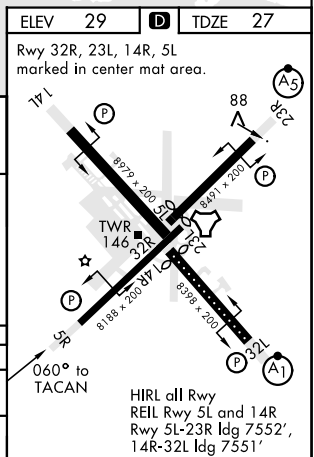


EMERG SAFE ALT 100 NM 4100

VGS| TCH and TCH not coincident.



CATEGORY	A	B	C	D
S-5R	500-1	473 (500-1)	500-1 $\frac{3}{8}$	473 (500-1 $\frac{3}{8}$)
 CIRCLING	580-1	551 (600-1)	600-1 $\frac{1}{2}$ 571 (600-1 $\frac{1}{2}$)	600-2 571 (600-2)



CHERRY POINT, NORTH CAROLINA

34°54'N-76°53'W CHERRY POINT MCAS (CUNNINGHAM FLD) (KNKT)

Amdt 4 10SEP20

TACAN RWY 5R

SE-2, 03 DEC 2020 to 31 DEC 2020

SE-2, 03 DEC 2020 to 31 DEC 2020