

LOC/DME I-GKK

**109.1**

Chan 28

APP CRS

**054°**

Rwy Idg TDZE

**10000**  
**384**

Apt Elev

**435**

ILS or LOC RWY 5L

RALEIGH-DURHAM INTL (RDU)

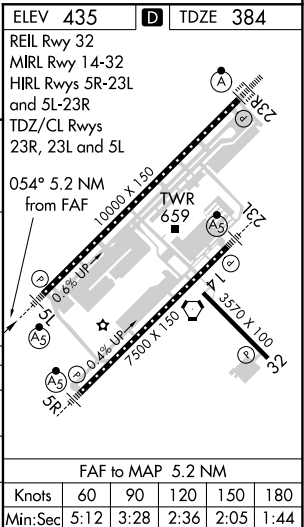
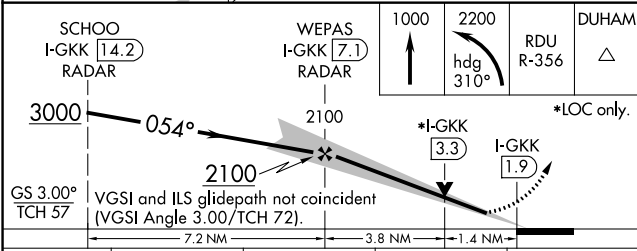
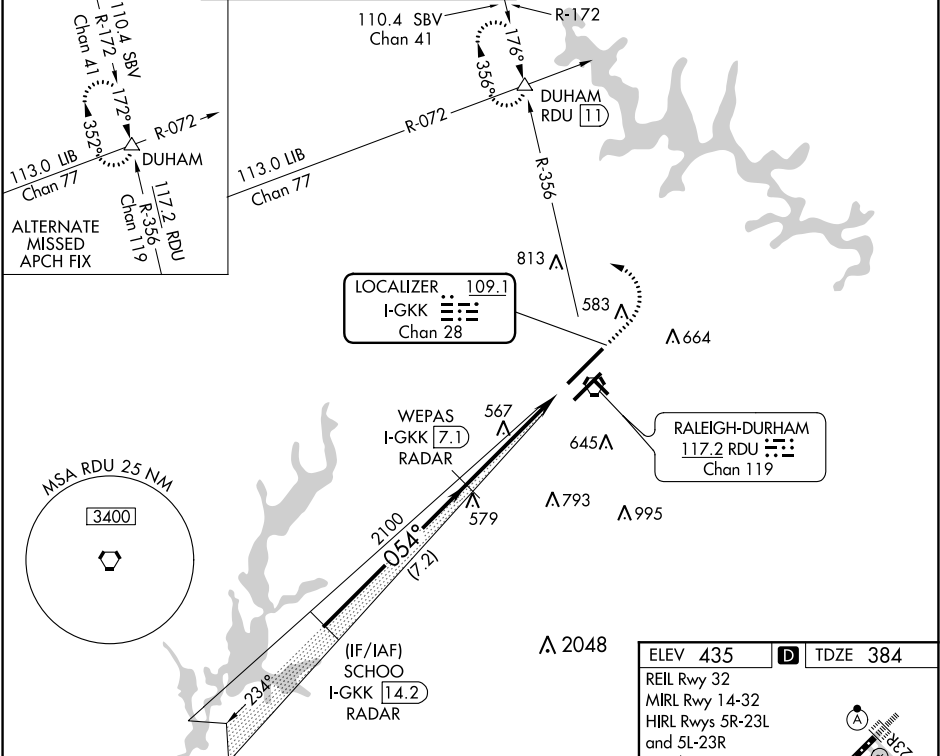
RADAR required for procedure entry, DME required.

Simultaneous approach authorized.

MALSR

MISSED APPROACH: Climb to 1000 then climbing left turn to 2200 on heading 310° and RDU VORTAC R-356 to DUHAM INT/RDU 11 DME and hold.

D-ATIS	RALEIGH APP CON	(EAST) RALEIGH TOWER	(WEST)	(EAST) GND CON	(WEST)	CLNC DEL	CPDLC
123.8	127.675 307.9	127.45 257.8	119.3 257.8	121.9 348.6	121.7 348.6	120.1	
		Rwys 5R-23L and 14-32	Rwy 5L-23R	Rwys 5R-23L and 14-32	Rwy 5L-23R		



SE-2, 03 DEC 2020 to 31 DEC 2020

SE-2, 03 DEC 2020 to 31 DEC 2020