

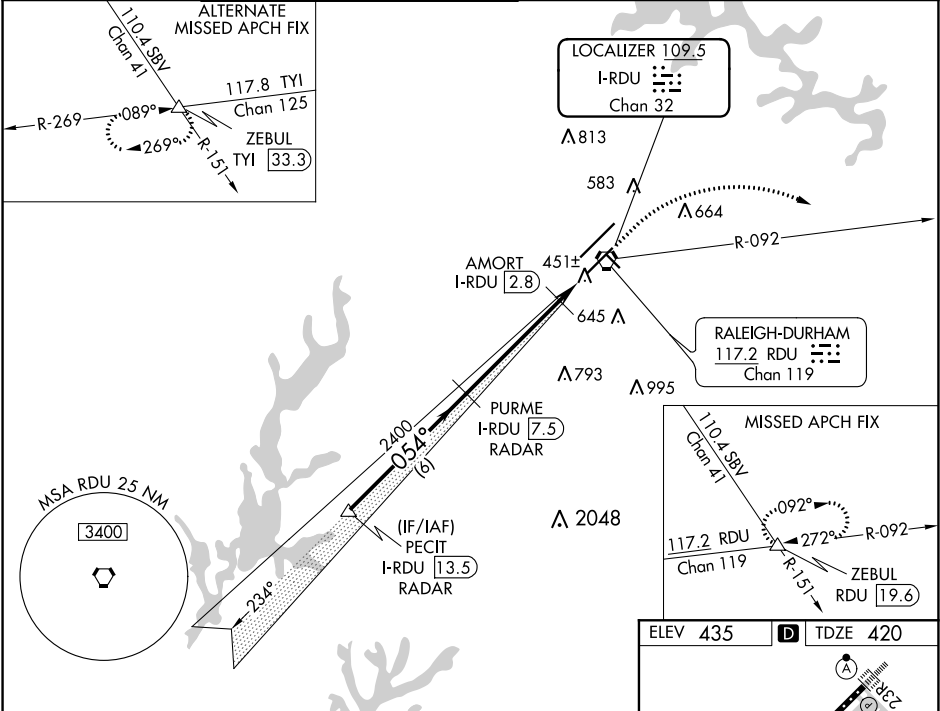
LOC/DME I-RDU <b>109.5</b> Chan <b>32</b>	APP CRS <b>054°</b>	Rwy Idg <b>7500</b> TDZE <b>420</b> Apt Elev <b>435</b>	ILS or LOC RWY 5R RALEIGH-DURHAM INTL (RDU)	
---	------------------------	---	--	--

RADAR required for procedure entry.  
DME required for LOC only.

MALSRR

MISSED APPROACH: Climb to 1000 then climbing right turn to 2600 on heading 130° and on RDU VORTAC R-092 to ZEBUL INT/RDU 19.6 DME and hold.

D-ATIS	RALEIGH APP CON	(EAST) RALEIGH TOWER	(WEST)	(EAST) GND CON	(WEST)	CLNC DEL	CPDLC
123.8	127.675 307.9	127.45 257.8 Rwys 5R-23L and 14-32	119.3 257.8 Rwy 5L-23R	121.9 348.6 Rwys 5R-23L and 14-32	121.7 348.6 Rwy 5L-23R	120.1	



VGSI and ILS glidepath not coincident (VGSI Angle 3.00/TCH 62).

Diagram showing the 4000' glide path, 2400 DME fix, and 1000 DME fix. Distances: 6 NM, 4.7 NM, 1.4 NM. Altitudes: 1000, 2600, RDU 420, ZEBUL 435. Use I-RDU DME when on the localizer course.

CATEGORY	A	B	C	D
S-ILS 5R #	620/24 200 (200-½)			
S-LOC 5R	760/24 340 (400-½)		760/26 340 (400-½)	
CIRCLING	960-1 525 (600-1)		1020-1½ 585 (600-1½)	1180-2½ 745 (800-2½)

ELEV 435 TDZE 420

Diagram of the runway layout showing RWY 5R, RWY 32, RWY 14-32, and RWY 5L-23R. Distances: 1000 X 150, 7500 X 150, 3570 X 100. Altitudes: 659, 435, 420. Heading: 054° 6.1 NM from FAF.

REIL Rwy 32  
MIRL Rwy 14-32  
HIRL Rwys 5R-23L and 5L-23R  
TDZ/CL Rwys 23R, 23L and 5L