

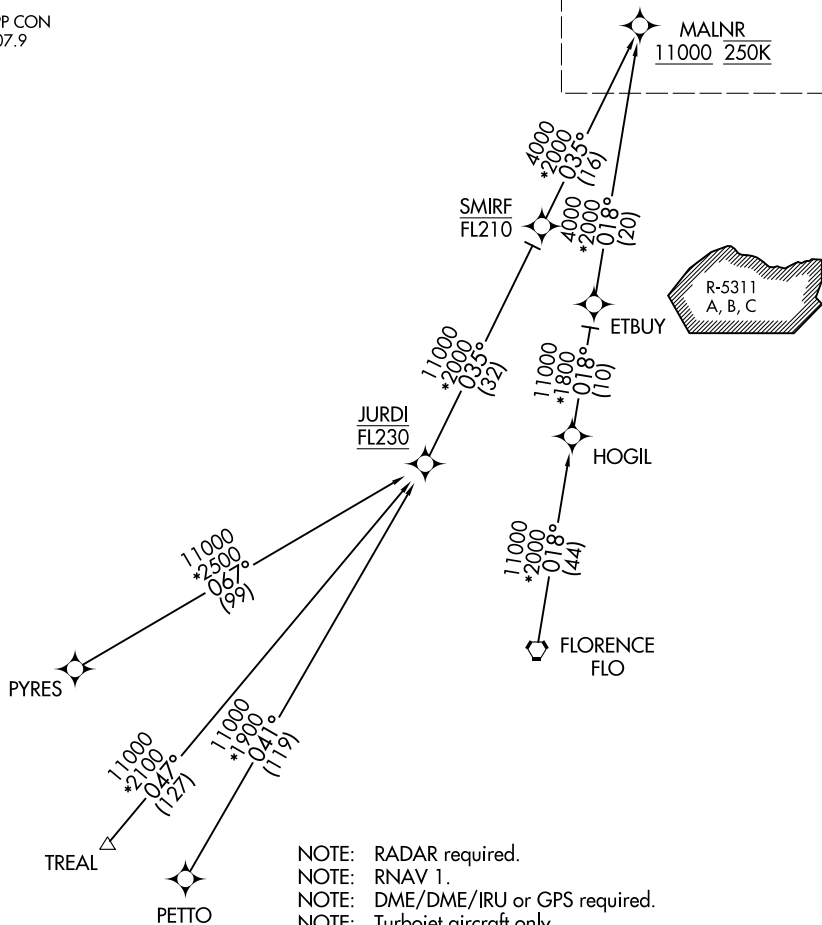
AL-516 (FAA)

MALNR FOUR ARRIVAL (RNAV) Transition Routes

RALEIGH-DURHAM INTL (RDU)
RALEIGH/DURHAM, NORTH CAROLINA

D-ATIS
123.8
RALEIGH APP CON
127.675 307.9

See following page for Arrival Routes



NOTE: RADAR required.
NOTE: RNAV 1.
NOTE: DME/DME/IRU or GPS required.
NOTE: Turbojet aircraft only.
NOTE: FLORENCE TRANSITION: Assigned by ATC only.

(CONTINUED ON FOLLOWING PAGE)
(NARRATIVE ON FOLLOWING PAGE)

FLORENCE TRANSITION (FLO.MALNR4)
PETTO TRANSITION (PETTO.MALNR4)
PYRES TRANSITION (PYRES.MALNR4)
TREAL TRANSITION (TREAL.MALNR4)

NOTE: Chart not to scale.

MALNR FOUR ARRIVAL (RNAV) Transition Routes

RALEIGH/DURHAM, NORTH CAROLINA
RALEIGH-DURHAM INTL (RDU)

SE-2, 03 DEC 2020 to 31 DEC 2020