

WAAS CH <b>65713</b> <b>W23B</b>	APP CRS <b>234°</b>	Rwy Idg <b>7500</b> TDZE <b>435</b> Apt Elev <b>435</b>
--	------------------------	---

## RNAV (GPS) Y RWY 23L

RALEIGH-DURHAM INTL (RDU)

RNP APCH.

**T** For uncompensated Baro-VNAV systems, LNAV/VNAV NA below -10°C (14°F) or above 54°C (130°F). Simultaneous approach authorized. LNAV procedure NA during simultaneous operations. Use of FD or AP required during simultaneous operations.

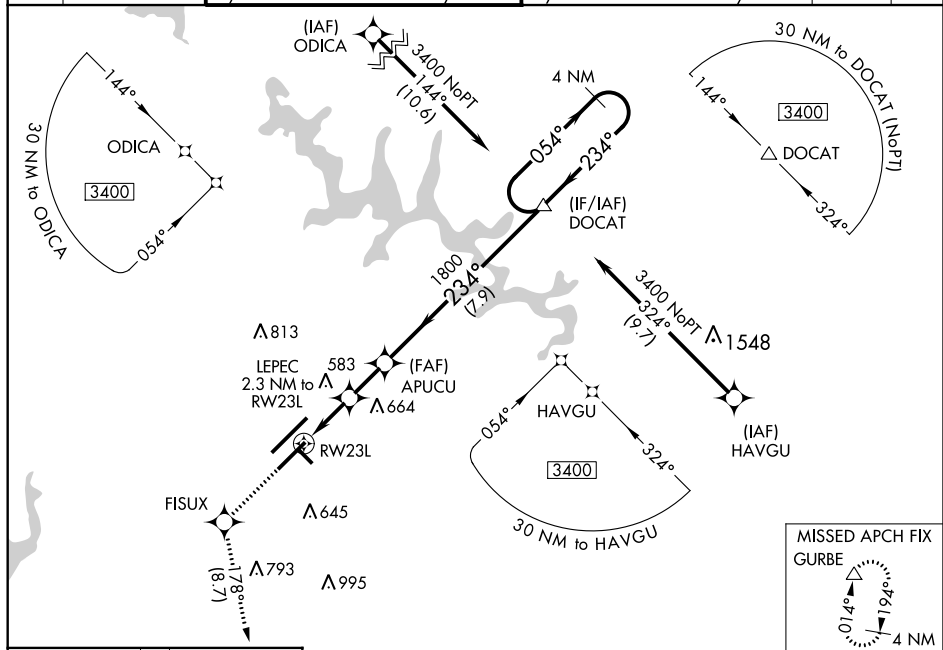
**A** For inop ALS, increase LNAV Cat C/D visibility to 1½ SM.

MAISD

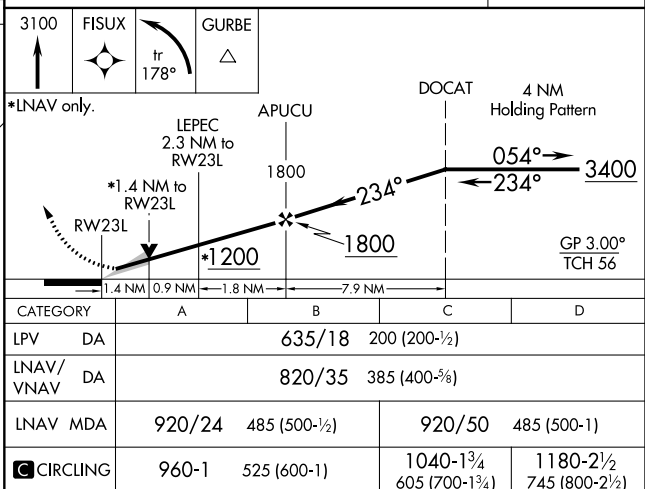
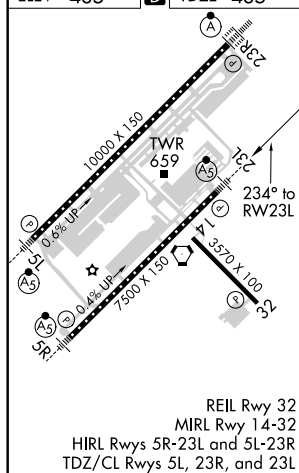



**MISSED APPROACH:**  
Climb to 3100 direct  
FISUX and left turn on  
track 178° to GURBE  
and hold.

D-ATIS	RALEIGH APP CON	(EAST) RALEIGH TOWER (WEST)	(EAST) GND CON (WEST)	CLNC DEL	CPDLC
123.8	127.675 307.9	127.45 257.8 Rwys 5R-23L and 14-32	119.3 257.8 Rwy 5L-23R	121.9 348.6 Rwys 5R-23L and 14-32	121.7 348.6 Rwy 5L-23R
				120.1	



ELEV 435		TDZE 435
----------	---	----------



CATEGORY		A	B	C	D
LPV	DA	635/18		200 (200-½)	
LNAV/ VNAV	DA	820/35		385 (400-¾)	
LNAV	MDA	920/24	485 (500-½)	920/50	485 (500-1)
 CIRCLING		960-1	525 (600-1)	1040-1¾ 605 (700-1¾)	1180-2½ 745 (800-2½)