

WAAS
CH **48813**
W05A

APP CRS
054°

Rwy Idg **10000**
TDZE **384**
Apt Elev **435**

RNAV (GPS) Y RWY 5L

RALEIGH-DURHAM INTL (RDU)

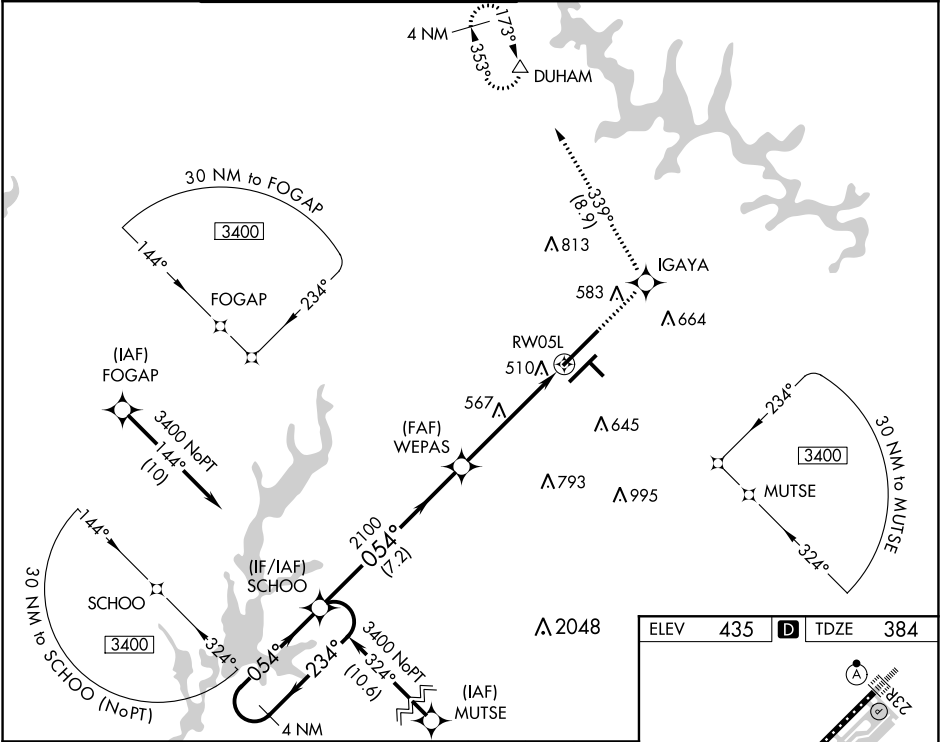
RNP APCH.

For uncompensated Baro-VNAV systems, LNAV/VNAV NA below -1.5°C (5°F) or above 48°C (118°F). Simultaneous approach authorized. LNAV procedure NA during simultaneous operations. Use of FD or AP providing RNAV track guidance required during simultaneous operations.

MALSR

MISSED APPROACH: Climb to 2200 direct IGAYA and on track 339° to DUHAM and hold.

D-ATIS	RALEIGH APP CON	(EAST) RALEIGH TOWER (WEST)	(EAST) GND CON	(WEST)	CLNC DEL	CPDLC
123.8	127.675 307.9	127.45 257.8 Rwys 5R-23L and 14-32	119.3 257.8 Rwy 5L-23R	121.9 348.6 Rwys 5R-23L and 14-32	121.7 348.6 Rwy 5L-23R	120.1



4 NM Holding Pattern		SCHO		2200 IGAYA		DUHAM	
3400 ← 234°		054° →		2100		RW05L	
GP 3.00°		TCH 57		*1.4 NM to RW05L		*LNAV only.	
VGSI and RNAV glidepath not coincident (VGSI Angle 3.00/TCH 72).		2100		7.2 NM		3.8 NM	
1.4 NM		CATEGORY		A		B	
LPV DA		595/24		211 (200-1/2)		C	
LNAV/VNAV DA		792/50		408 (400-1)		D	
LNAV MDA		880/24		496 (500-1/2)		880/50	
CIRCLING		960-1		525 (600-1)		1040-1 3/4	
						605 (700-1 3/4)	
						1180-2 1/2	
						745 (800-2 1/2)	

