

WAAS  
CH **90213**  
**W05B**

APP CRS  
**054°**

Rwy Idg **7500**  
TDZE **420**  
Apt Elev **435**

RNAV (GPS) Y RWY 5R

RALEIGH-DURHAM INTL (RDU)

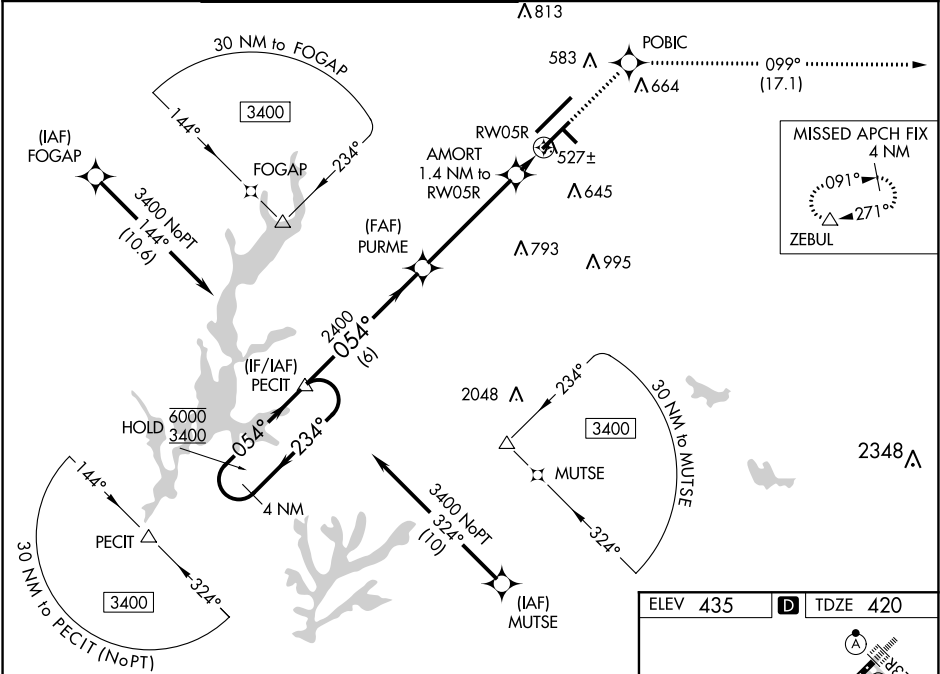
RNP APCH.

Simultaneous approach authorized. LNAV procedure NA during simultaneous operations.  
For uncompensated Baro-VNAV systems, LNAV/VNAV NA below -10°C (14°F) or above 54°C (130°F). Use of FD or AP required during simultaneous operations. For inop ALS, increase LNAV/VNAV all Cats visibility to RVR 4500 and LNAV Cats C/D visibility to RVR 5500.

MALSRL

MISSED APPROACH:  
Climb to 2600 direct POBIC and on track 099° to ZEBUL and hold.

D-ATIS	RALEIGH APP CON	(EAST) RALEIGH TOWER	(WEST)	(EAST) GND CON	(WEST)	CLNC DEL	CPDLC
123.8	127.675 307.9	127.45 257.8	119.3 257.8	121.7 348.6	121.7 348.6	120.1	
		Rwys 5R-23L and 14-32	Rwy 5L-23R	Rwys 5R-23L and 14-32	Rwy 5L-23R		



VGSI and RNAV glidepath not coincident (VGSI Angle 3.00/TCH 62).

4 NM Holding Pattern

6000 3400

GP 3.00° TCH 56

2600 POBIC tr 099° ZEBUL

\*LNAV only.

6 NM 4.7 NM 1.4 NM

CATEGORY	A	B	C	D
LPV DA		620/24	200 (200-½)	
LNAV/VNAV DA		710/24	290 (300-½)	
LNAV MDA	780/24	360 (400-½)	780/30	360 (400-¾)
CIRCLING	960-1	525 (600-1)	1040-1¾ 605 (700-1¾)	1180-2½ 745 (800-2½)

ELEV 435 TDZE 420

Diagram of RWY 5R and RWY 23L/23R with various altitudes and distances.

REIL Rwy 32 MIRL Rwy 14-32  
HIRL Rwys 5R-23L and 5L-23R  
TDZ/CL Rwys 23R, 23L and 5L