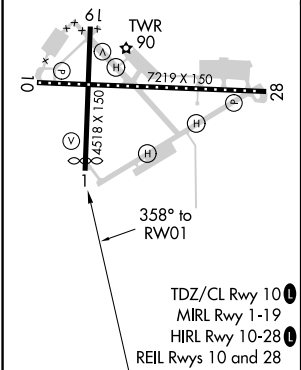
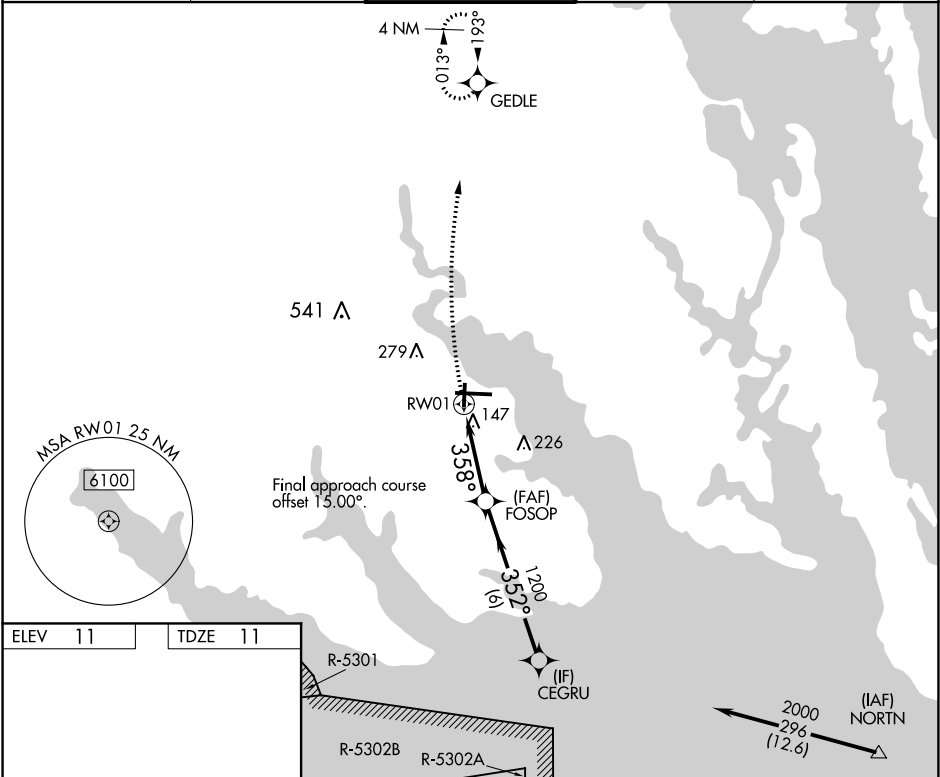


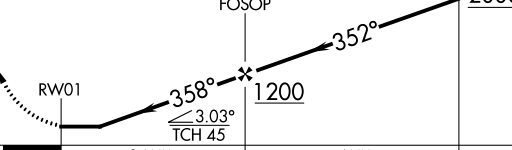

APP CRS	Rwy Idg	4219
358°	TDZE	11
	Apt Elev	11

RNAV (GPS) RWY 1

ELIZABETH CITY COAST GUARD AIR STATION/RGNL (E/C/G)

RNP APCH. Rwy 1 helicopter visibility reduction below 3/4 SM NA. ATC clearance required to penetrate R-5302B. Procedure NA when tethered balloon located approximately 2 miles southeast airport is flying.		MISSED APPROACH: Climbing right turn to 2100 direct GEDLE and hold.		
ASOS 124.375	NORFOLK APP CON 119.55 269.425	ELIZABETH CITY TOWER ★ 120.5 (CTAF) 355.6	GND CON 121.9	UNICOM 122.95



2100 GEDLE VGSi and descent angles not coincident (VGSi Angle 2.75/TCH 25).		CEGRU 2000		
				
CATEGORY	A	B	C	D
LNNAV MDA	460-1	449 (500-1)	460-1 $\frac{3}{8}$	449 (500-1 $\frac{3}{8}$)
 CIRCLING	480-1	469 (500-1)	640-1 $\frac{3}{4}$ 629 (700-1 $\frac{3}{4}$)	640-2 629 (700-2)

SE-2, 03 DEC 2020 to 31 DEC 2020

SE-2, 03 DEC 2020 to 31 DEC 2020