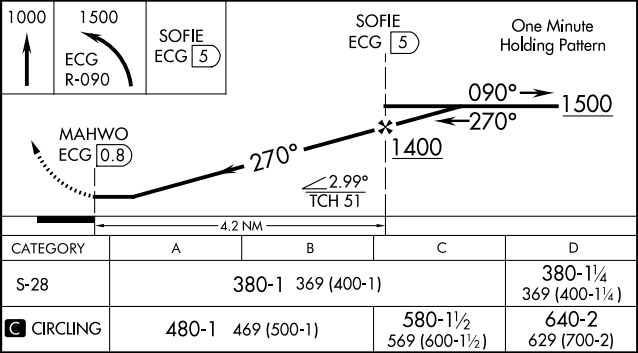
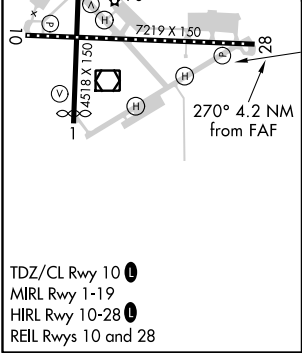
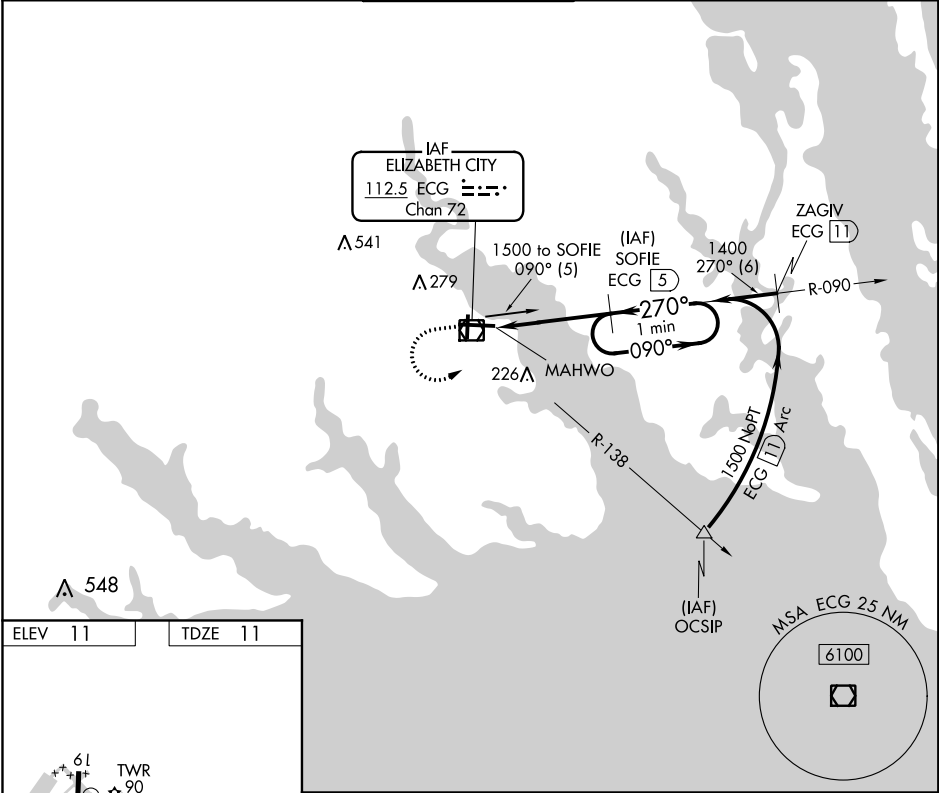


VOR/DME ECG	APP CRS	Rwy Idg
112.5	270°	7219
Chan 72		TDZE 11
		Apt Elev 11

VOR/DME RWY 28
ELIZABETH CITY COAST GUARD AIR STATION/RGNL (ECG)

<p>⚠ Procedure NA when tethered balloon located approximately 2 miles southeast of airport is flying. When local altimeter setting not received, use Currituck altimeter setting and increase all MDAs 40 feet and S-28 Cat C visibility ¼ SM and Circling Cat C visibility ¼ SM. Rwy 28 helicopter visibility reduction below ¾ SM NA.</p>	<p>MISSED APPROACH: Climb to 1000 then climbing left turn to 1500 via ECG R-090 to SOFIE 5 DME and hold.</p>
---	--

ASOS 124.375	NORFOLK APP CON 119.55 269,425	ELIZABETH CITY TOWER★ 120.5 (CTAF) 355.6	GND CON 121.9	UNICOM 122.95
------------------------	--	--	-------------------------	-------------------------



SE-2, 03 DEC 2020 to 31 DEC 2020

SE-2, 03 DEC 2020 to 31 DEC 2020