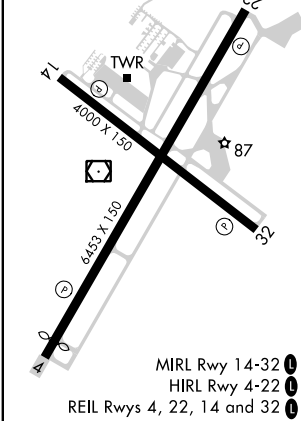
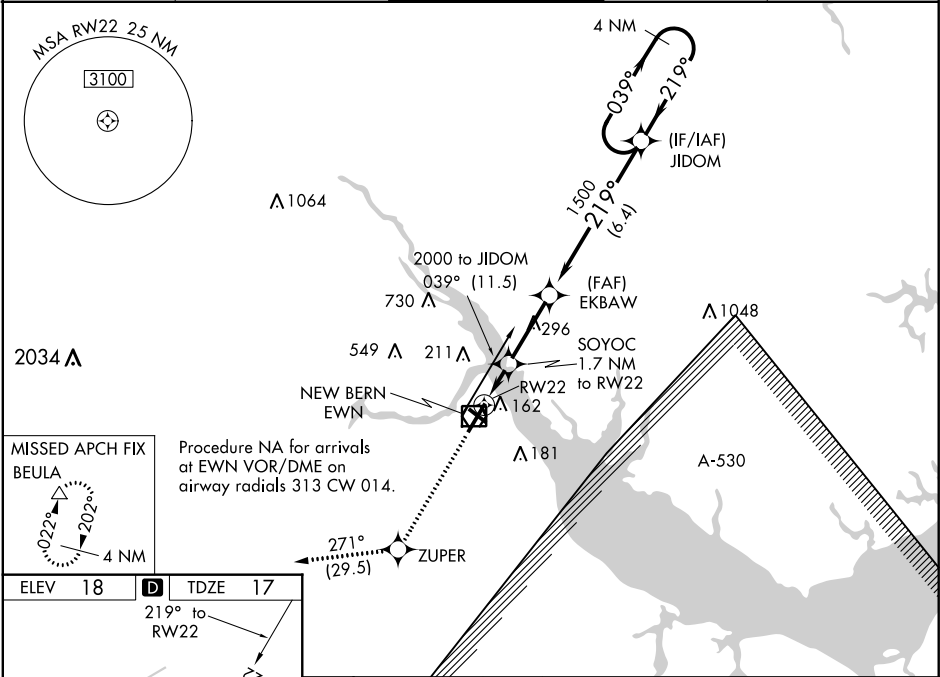


WAAS CH 63002 W22A	APP CRS 219°	Rwy Idg 6153 TDZE 17 Apt Elev 18
--	------------------------	---

RNAV (GPS) RWY 22
COASTAL CAROLINA RGNL (EWN)

RNP APCH. ▼ Rwy 14, 32 helicopter visibility reduction below 1 SM NA. Rwy 22 helicopter visibility reduction below ¾ SM NA. Circling Rwy 14, 32 NA at night. Baro-VNAV NA when using Cherry Point altimeter setting. For uncompensated Baro-VNAV systems, LNAV/VNAV NA below -15°C (5°F) or above 54°C (130°F). When local altimeter setting not received, use Cherry Point altimeter setting; increase all DA 32 feet and all MDA 40 feet. Increase LPV and LNAV/VNAV visibility ½ SM, and Circling Cat C/D visibility ¼ SM.		MISSED APPROACH: Climb to 3000 direct ZUPER and on track 271° to BEULA and hold.		
ASOS 118.525	CHERRY POINT APP CON 119.35 374.9	NEW BERN TOWER★ 124.25 (CTAF) 0	CLNC DEL 121.7	GND CON 121.7



3000	ZUPER	tr 271°	BEULA △	4 NM Holding Pattern			
* LNAV only.		SOYOC 1.7 NM to RW22	EKBW 1500	JIDOM	039° → 2000		
RW22		*580	219°	← 219°	GP 3.00° TCH 31		
1.7 NM		2.9 NM	6.4 NM				
CATEGORY	A	B	C	D			
LPV DA	269-7/8		252 (300-7/8)				
LNAV/ VNAV DA	376-1 1/4		359 (400-1 1/4)				
LNAV MDA	480-1 463 (500-1)		480-1 3/8	463 (500-1 3/8)			
CIRCLING	480-1		520-1	600-1 1/2		860-2 3/4	
	462 (500-1)		502 (600-1)	582 (600-1 1/2)		842 (900-2 3/4)	