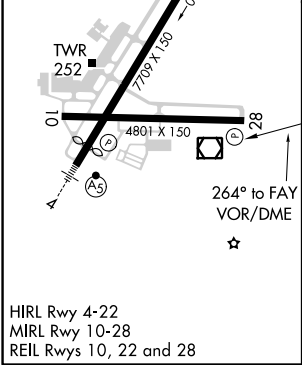
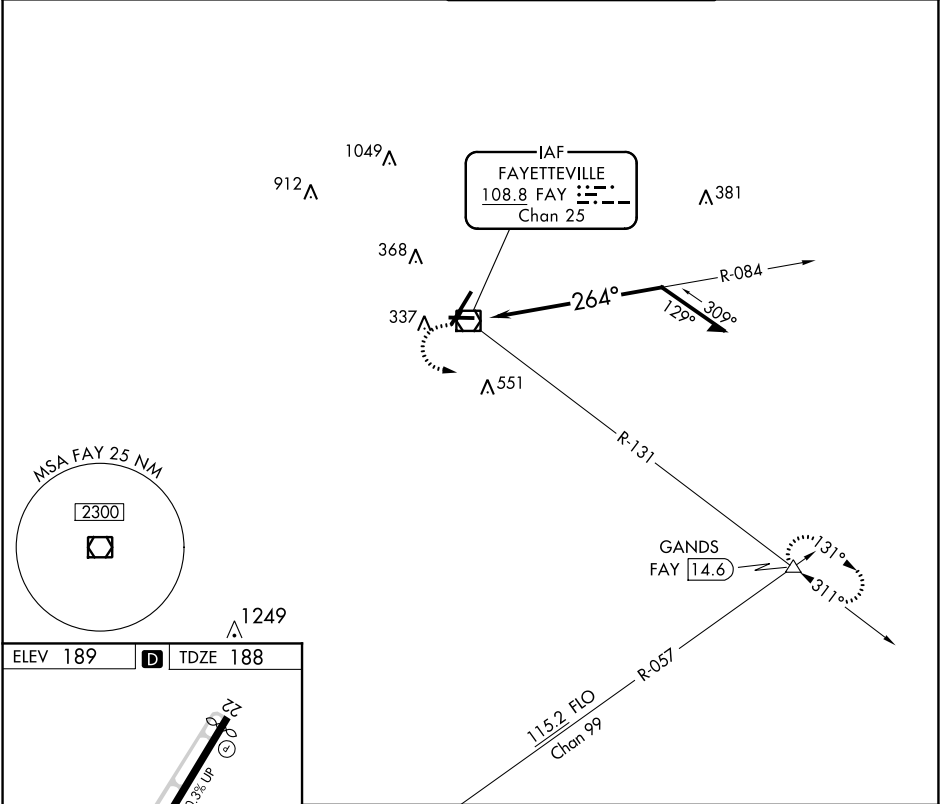


VOR/DME FAY 108.8 Chan 25	APP CRS 264°	Rwy Idg TDZE 188 Apt Elev 189	4801
---	------------------------	---	-------------

VOR RWY 28
FAYETTEVILLE RGNL/GRANNIS FIELD (FAY)

<div><div></div></div>		MISSED APPROACH: Climb to 1100 then climbing left turn to 3000 on FAY R-131 to GANDS INT/FAY 14.6 DME and hold.	
ATIS 121.25	FAYETTEVILLE APP CON 133.0 290.25	FAYETTEVILLE TOWER 118.3 269.2	GND CON 121.7 348.6



1100	3000	GANDS	FAY VOR/DME		Remain within 10 NM
↑	FAY R-131	△	084°		2000
			264°		
			0.1 1.6		
CATEGORY	A	B	C	D	
S-28	700-1	512 (600-1)	700-1 ³ / ₈	512 (600-1 ³ / ₈)	
CIRCLING	700-1	511 (600-1)	860-2 671 (700-2)	860-2 ¹ / ₄ 671 (700-2 ¹ / ₄)	

SE-2, 03 DEC 2020 to 31 DEC 2020

SE-2, 03 DEC 2020 to 31 DEC 2020