

WAAS CH 99422 W19A	APP CRS 194°	Rwy Idg 4400 TDZE 1166 Apt Elev 1190
--	------------------------	---

RNAV (GPS) RWY 19

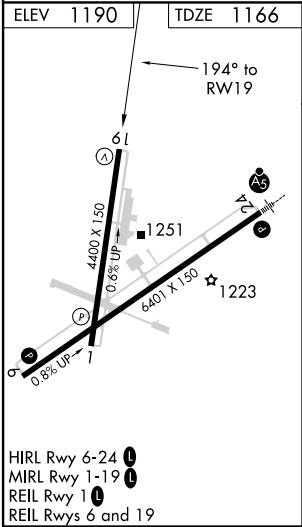
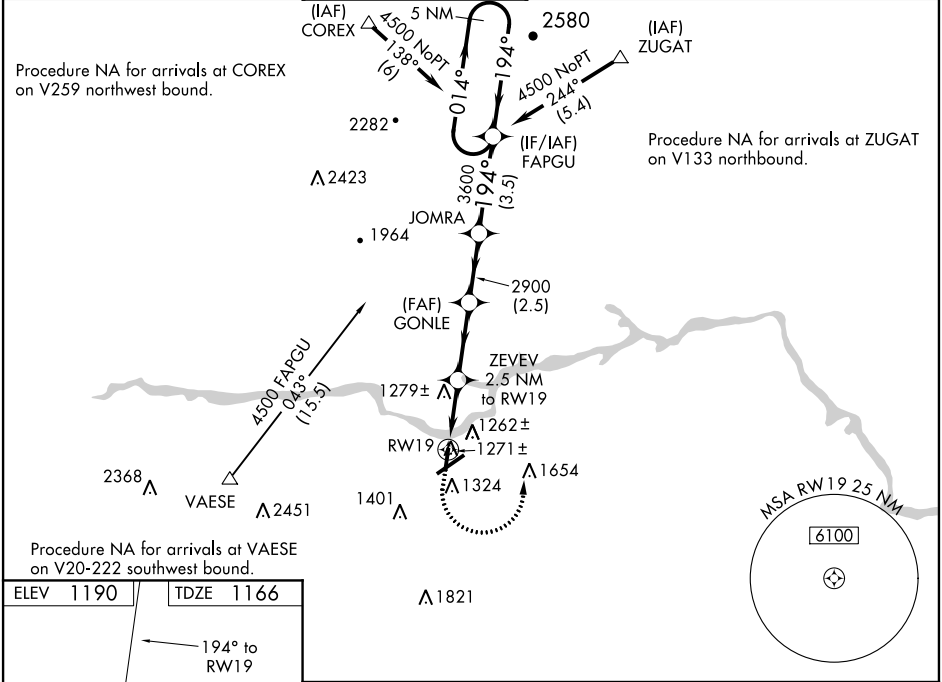
HICKORY RGNL (HKY)

RNP APCH

Baro-VNAV NA when using Morganton altimeter setting. For uncompensated Baro-VNAV systems, LNAV/VNAV NA below -17°C (2°F) or above 36°C (96°F). Rwy 19 helicopter visibility reduction below 1 SM NA. When local altimeter setting not received, use Morganton altimeter setting and increase all DA 39 feet and all MDA 40 feet; increase LNAV/VNAV all Cats, and LNAV Cat C/D visibility ½ mile. Straight-in Rwy 19 NA at night, Circling Rwy 1, 6, 19 NA at night.

MISSED APPROACH:
Climb to 1700 then climbing left turn to 5600 direct FAPGU and hold, continue climb-in-hold to 5600.

ASOS 118.325	ATLANTA CENTER 125.15 263.0	HICKORY TOWER ★ 128.15 (CTAF) 0	GND CON 121.7	CLNC DEL 121.7	CLNC DEL 124.25 (When twr closed)
------------------------	---------------------------------------	---	-------------------------	--------------------------	--



1700	5600	FAPGU	VGSI and RNAV glidepath not coincident (VGSI Angle 3.00/TCH 33).	5 NM Holding Pattern
* RNAV only.	ZEEV 2.5 NM to RW19	GONLE 2900	JOMRA 3600	014° → 4500 ← 194°
	2000	2900		GP 3.00° TCH 45
	2.5 NM	2.8 NM	2.5 NM	3.5 NM
CATEGORY	A	B	C	D
LPV DA	1416-1	250 (300-1)		
LNAV/VNAV DA	1452-1	286 (300-1)		
LNAV MDA	1540-1	374 (400-1)		
CIRCLING	1640-1	450 (500-1)	1640-1½ 450 (500-1½)	1740-2 550 (600-2)