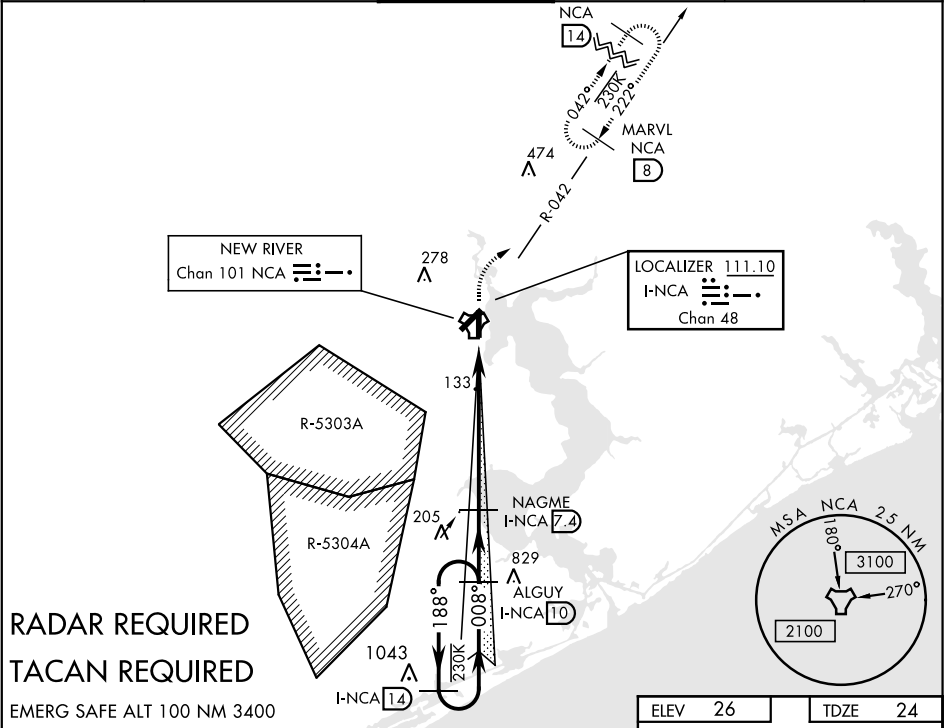


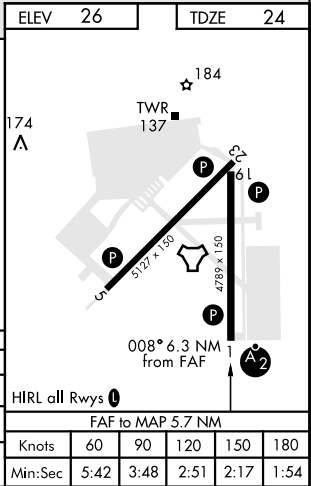
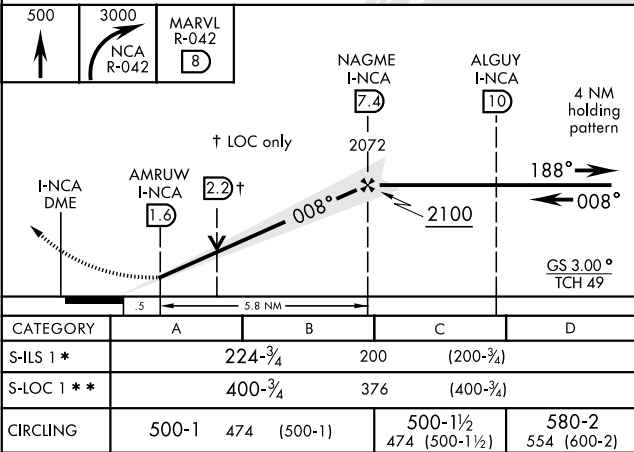
ILS or LOC/DME RWY 1

LOC I-NCA 111.10 Chan 48	APCH CRS 008°	Rwy Idg 4789 TDZE 24 Arpt Elev 26	AL-732 [USN]	NEW RIVER MCAS (MC CUTCHEON FLD) (KNCA)		
▼ *When ALS inop, increase CAT ABCD vis to ¾ mile. **When ALS inop, increase CAT ABCD vis to 1 mile.			SALS A2	MISSED APPROACH: Climb to 500, then climbing right turn to 3000, intercept NCA R-042 to MARVL and hold, continue climb-in-hold to 3000.		
ATIS ★ 288.325	CHERRY POINT APP CON 119.35 377.175	NEW RIVER TOWER ★ 120.00* 360.2	GND CON 121.8 254.275	CLNC DEL 269.25	ASR/PAR	



RADAR REQUIRED
TACAN REQUIRED

EMERG SAFE ALT 100 NM 3400



ILS or LOC/DME RWY 1

SE-2, 03 DEC 2020 to 31 DEC 2020

SE-2, 03 DEC 2020 to 31 DEC 2020