

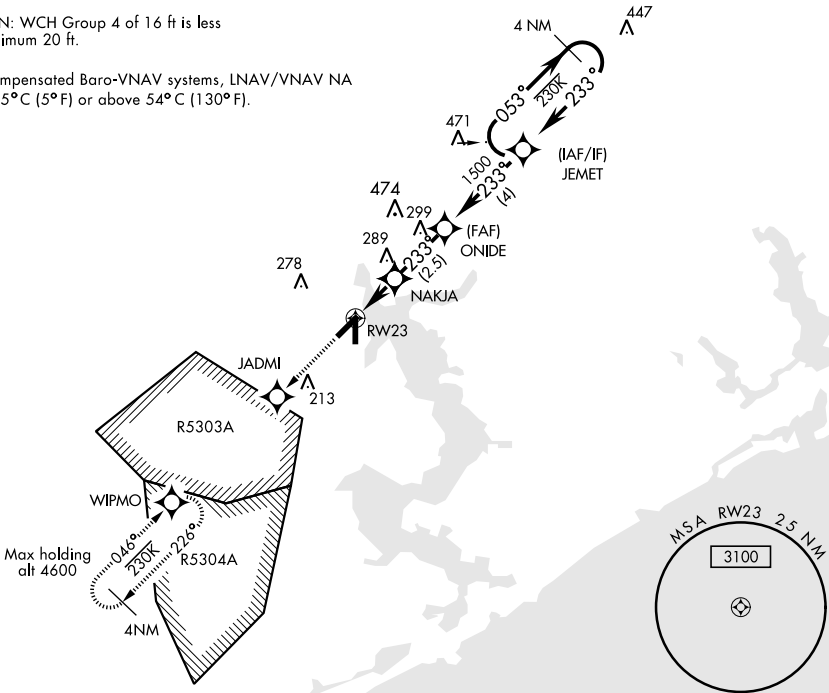
JACKSONVILLE, NORTH CAROLINA

RNAV (GPS) RWY 23

WAAS Chan <b>92556</b> <b>W23A</b>		APCH CRS <b>233°</b>	Rwy ldg <b>5127</b> TDZE <b>24</b> Arpt Elev <b>26</b>	AL-732 [USN]	NEW RIVER MCAS (MC CUTCHEON FLD) (KNCA)			
DME/DME RNP-0.3 NA.				MISSED APPROACH: Climb to 1600 direct JADMI direct WIPMO and hold.				
<div>▼</div>								
ATIS ★ <b>288.325</b>		CHERRY POINT APP CON <b>119.35 377.175</b>		NEW RIVER TOWER ★ <b>120.0 0 ★ 360.2</b>		GND CON <b>121.8 254.275</b>	CLNC DEL <b>269.25</b>	ASR/ PAR

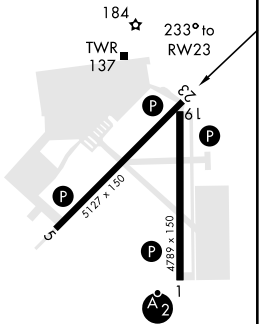
CAUTION: WCH Group 4 of 16 ft is less than minimum 20 ft.

For uncompensated Baro-VNAV systems, LNAV/VNAV NA below -15°C (5°F) or above 54°C (130°F).



EMERG SAFE ALT 100 NM 3400

1600 ↑	JADMI	WIPMO	ELEV 26		TDZE 24	
<div>↑ LNAV only</div> <div>↑ NAKJA</div> <div>↑ 1.2 NM to RW23</div> <div>233°</div> <div>700</div> <div>2 NM</div> <div>2.5 NM</div> <div>ONIDE</div> <div>JEMET</div> <div>053°</div> <div>233°</div> <div>1500</div> <div>GP 3.05°</div> <div>TCH 37</div>			<div>174 Λ</div> <div>184 ★</div> <div>TWR 137</div> <div>233° to RW23</div> <div>5127 × 150</div> <div>4789 × 150</div> <div>1</div> <div>2</div> <div>61</div> <div>1</div> <div>2</div>			
CATEGORY	A		B		C	D
LPV DA	274-7/8		250		(300-7/8)	
LNAV/VNAV DA	313-1 289 (300-1)	324-1 300 (300-1)	332-1 308 (400-1)	343-1 1/8 319 (400-1 1/8)		
LNAV MDA	440-1	416 (500-1)	440-1 1/8	416 (500-1 1/8)		
CIRCLING	500-1	474 (500-1)	500-1 1/2 474 (500-1 1/2)	580-2 554 (600-2)		
HIRL all Rwy 0						



JACKSONVILLE, NORTH CAROLINA

34°43'N-77°26'W

NEW RIVER MCAS (MC CUTCHEON FLD) (KNCA)

Amdt 2 08OCT20

RNAV (GPS) RWY 23

SE-2, 03 DEC 2020 to 31 DEC 2020

SE-2, 03 DEC 2020 to 31 DEC 2020