

JACKSONVILLE, NORTH CAROLINA

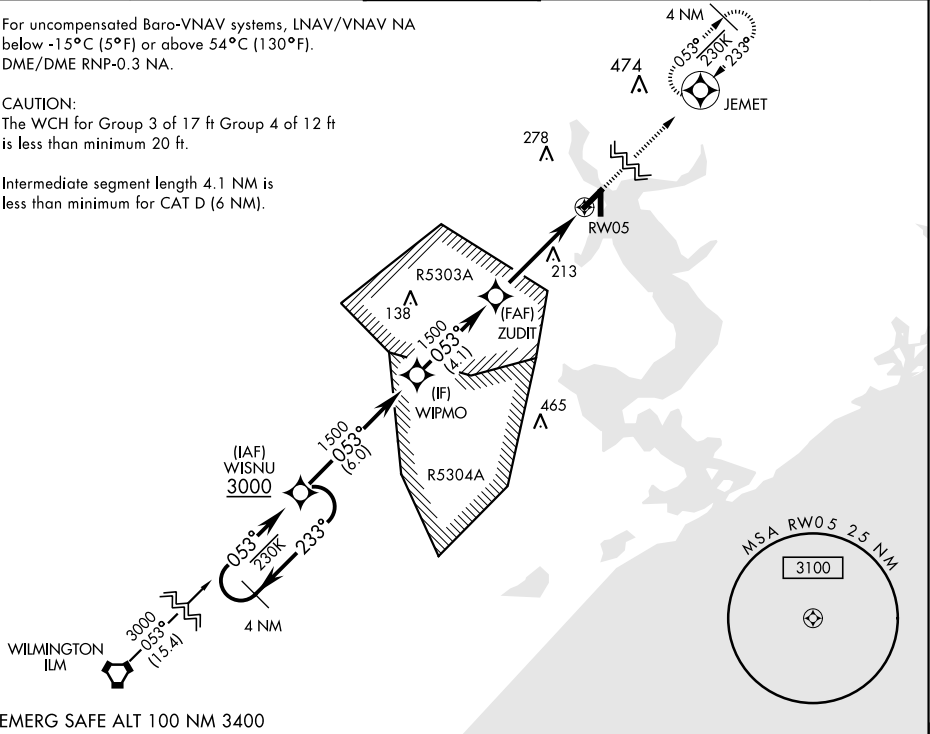
# RNAV (GPS) RWY 5

WAAS Chan <b>77243</b> <b>W05A</b>	APCH CRS <b>053°</b>	Rwy Idg <b>5127</b> TDZE <b>26</b> Arpt Elev <b>26</b>	AL-732 [USN] NEW RIVER MCAS (MC CUTCHEON FLD) (KNCA)			
<div>V</div>			MISSED APPROACH: Climbing to 1500 direct JEMET and hold.			
ATIS ★ <b>288.325</b>	CHERRY POINT APP CON <b>119.35 377.175</b>		NEW RIVER TOWER ★ <b>120.0 0 ★ 360.2</b>	GND CON <b>121.8 254.275</b>	CLNC DEL <b>269.25</b>	ASR/ PAR

For uncompensated Baro-VNAV systems, LNAV/VNAV NA below -15°C (5°F) or above 54°C (130°F).  
DME/DME RNP-0.3 NA.

CAUTION:  
The WCH for Group 3 of 17 ft Group 4 of 12 ft is less than minimum 20 ft.

Intermediate segment length 4.1 NM is less than minimum for CAT D (6 NM).



EMERG SAFE ALT 100 NM 3400

					ELEV 26	TDZE 26
CATEGORY	A	B	C	D		
LPV DA	226-3/4		200	(200-3/4)		
LNAV/VNAV DA	305-7/8 279 (300-7/8)	316-1 290 (300-1)	324-1 298 (300-1)	335-1 309 (400-1)		
LNAV MDA	440-1	414 (500-1)	440-1 1/8	414 (500-1 1/8)		
CIRCLING	500-1	474 (500-1)	500-1 1/2 474 (500-1 1/2)	580-2 554 (600-2)		
HIRL all Rwy 0						

JACKSONVILLE, NORTH CAROLINA 34°43'N-77°26'W NEW RIVER MCAS (MC CUTCHEON FLD) (KNCA)

Amdt 5 25APR19

# RNAV (GPS) RWY 5

SE-2, 03 DEC 2020 to 31 DEC 2020

SE-2, 03 DEC 2020 to 31 DEC 2020