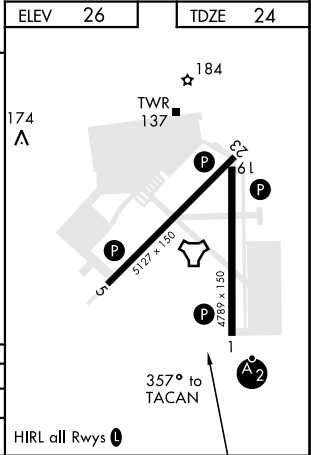
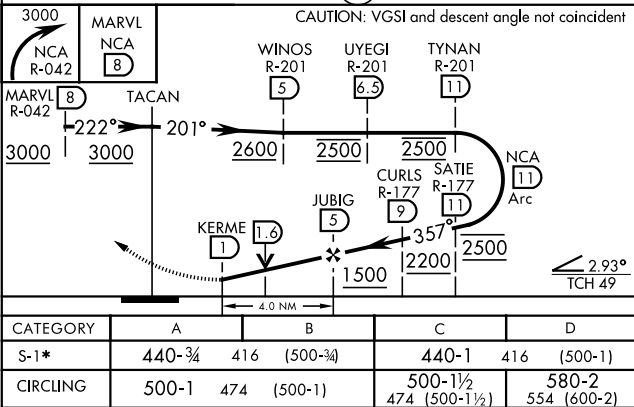
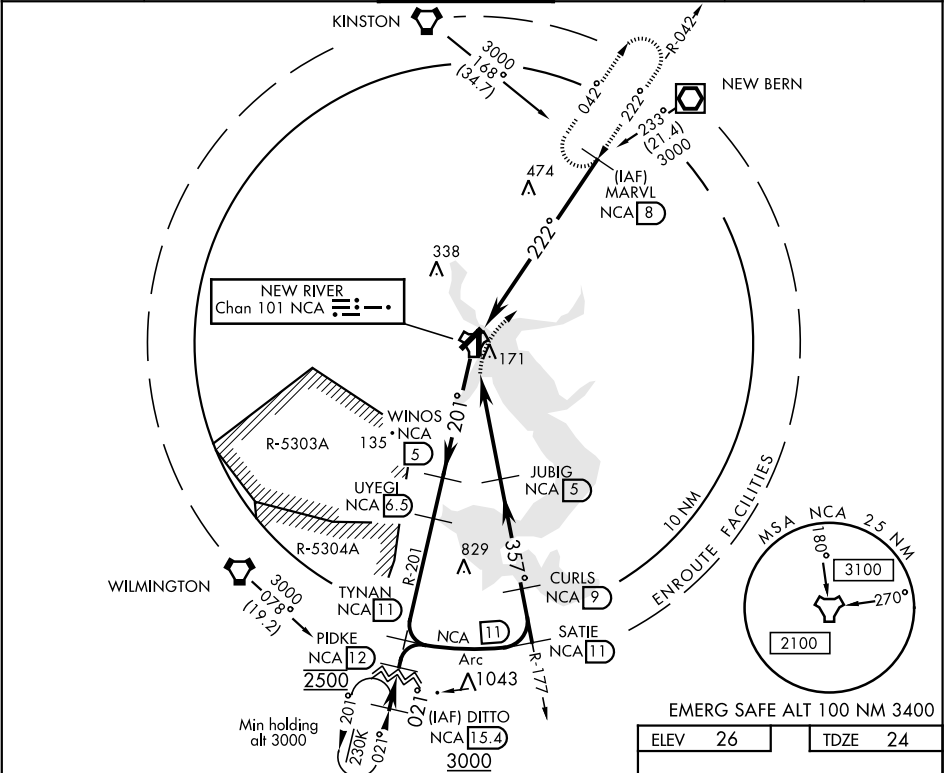


TACAN RWY 1

TACAN NCA Chan 101	APCH CRS 357°	Rwy ldg TDZE Arpt Elev	4789 24 26	AL-732 [USN]	NEW RIVER MCAS (MC CUTCHEON FLD) (KNCA)
* When ALS inop, increase vis CAT AB to 1 mile, CAT CD to 1 1/8 miles.				SALSF A2	MISSED APPROACH: Climbing right turn to 3000 direct MARVL (NCA R-042/ 8 DME) and hold. Continue climb-in-hold to 3000.
ATIS ★ 288.325	CHERRY POINT APP CON 119.35 377.175	NEW RIVER TOWER ★ 120.00★ 360.2	GND CON 121.8 254.275	CLNC DEL 269.25	ASR/PAR



TACAN RWY 1

SE-2, 03 DEC 2020 to 31 DEC 2020

SE-2, 03 DEC 2020 to 31 DEC 2020