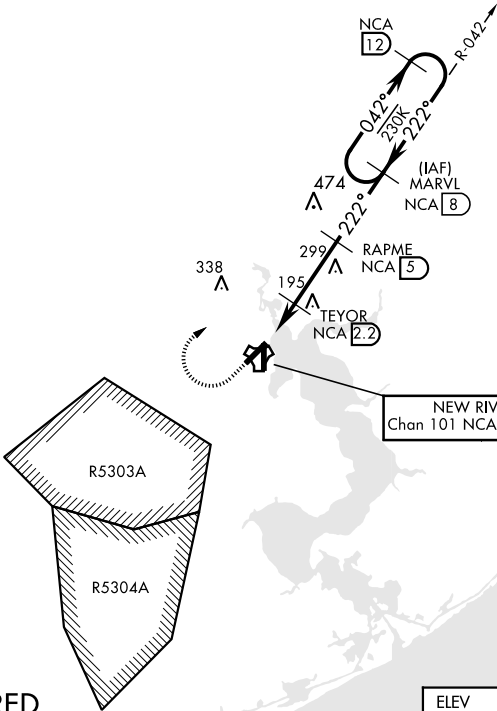


TACAN RWY 23

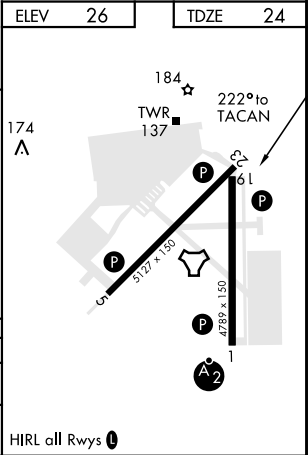
TACAN NCA Chan 101	APCH CRS 222°	Rwy Idg TDZE 24 Arprt Elev 26	AL-732 [USN] NEW RIVER MCAS (MC CUTCHEON FLD)(KNCA)	
------------------------------	-------------------------	---	---	--

MISSED APPROACH: Climb to 600 then climbing right turn to 1500, intercept NCA TACAN R-042 to MARVL and hold.					
ATIS ★ 288.325	CHERRY POINT APP CON 119.35 377.175	NEW RIVER TOWER★ 120.00★ 360.2	GND CON 121.8 254.275	CLNC DEL 269.25	ASR/PAR

CAUTION: Intmed segment length 3 NM.



600	1500	MARVL NCA 8
TACAN	TEYOR	RAPME
SEASO 1	1.7	2.2
4.0 NM	1500	1500
222°	042°	222°
3.02° TCH 36	1500	1500
CATEGORY	A	B
S-23	440-1 416 (500-1)	440-1 1/8 416 (500-1 1/8)
CIRCLING	500-1 474 (500-1)	500-1 1/2 474 (500-1 1/2)



TACAN RWY 23

SE-2, 03 DEC 2020 to 31 DEC 2020

SE-2, 03 DEC 2020 to 31 DEC 2020