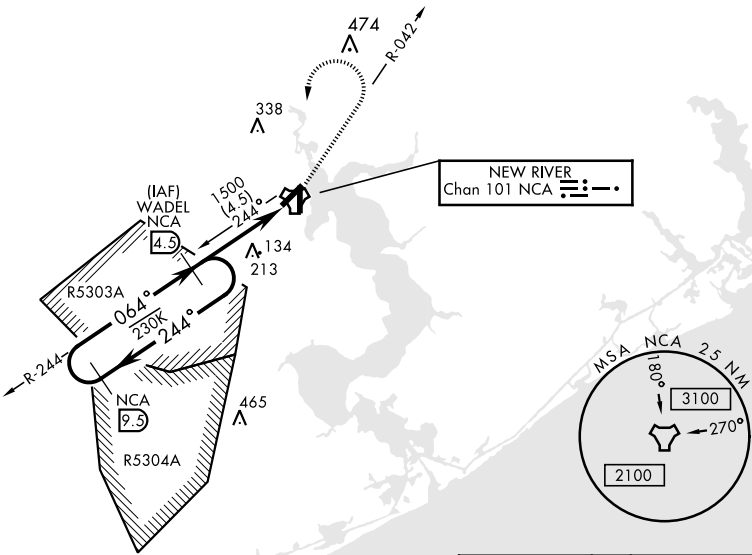


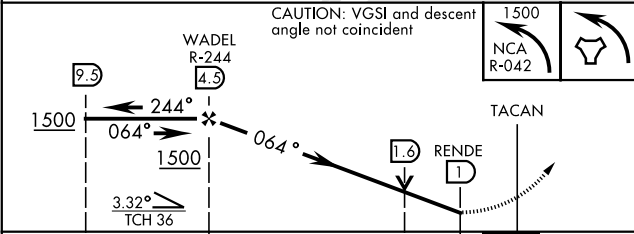
TACAN RWY 5

TACAN NCA Chan 101	APCH CRS 064°	Rwy Idg 5127 TDZE 26 Arprt Elev 26	AL-732 [USN] NEW RIVER MCAS (MC CUTCHEON FLD)(KNCA)		
MISSED APPROACH: Climbing left turn to 1500 via NCA R-042. Then left turn direct NCA TACAN, then via NCA R-244 direct WADEL and hold.					
ATIS ★ 288.325	CHERRY POINT APP CON 119.35 377.175	NEW RIVER TOWER★ 120.00★ 360.2	GND CON 121.8 254.275	CLNC DEL 269.25	ASR/PAR

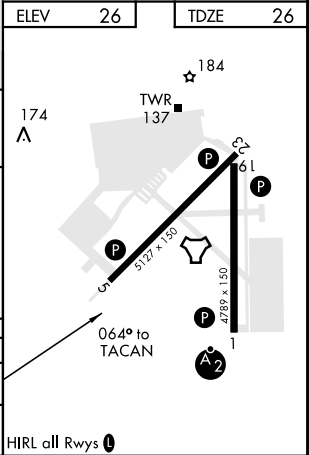


RADAR REQUIRED

EMERG SAFE ALT 100 NM 3400



CATEGORY	A	B	C	D
S-5	440-1 414 (500-1)	440-1 1/2 414 (500-1 1/2)	500-1 1/2 474 (500-1 1/2)	580-2 554 (600-2)
CIRCLING	500-1 474 (500-1)	500-1 1/2 474 (500-1 1/2)	580-2 554 (600-2)	



TACAN RWY 5

SE-2, 03 DEC 2020 to 31 DEC 2020

SE-2, 03 DEC 2020 to 31 DEC 2020