

LOC/DME I-EDE	APP CRS	Rwy Idg	6000
110.95	190°	TDZE	20
Chan 46 (Y)		Apt Elev	20

ILS or LOC RWY 19

NORTHEASTERN RGNL (EDE)

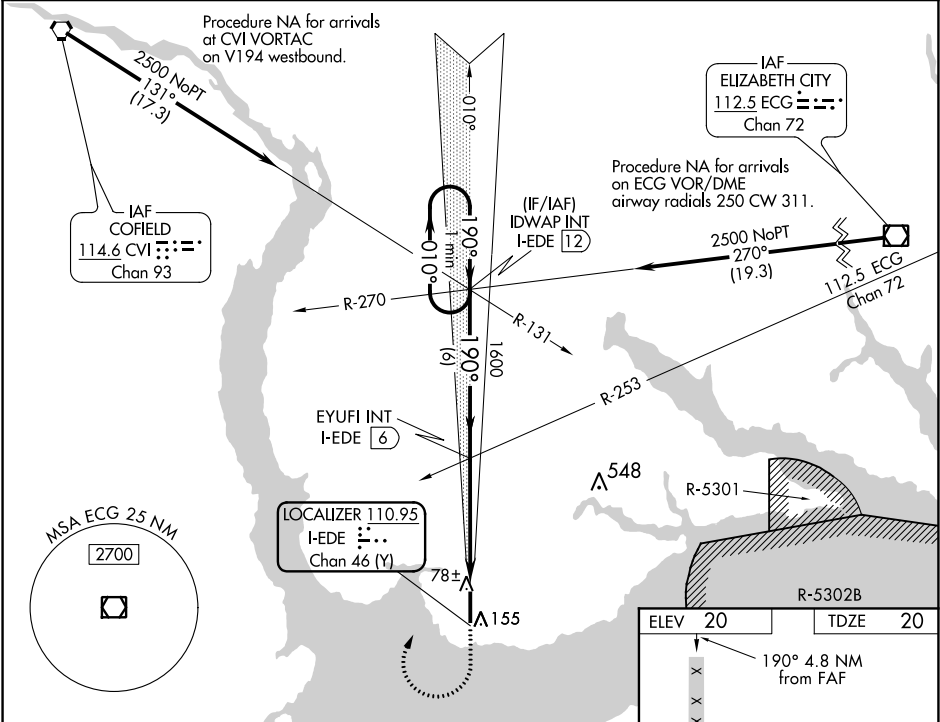
DME or RADAR required for procedure entry.

▼

When local altimeter setting not received, use Elizabeth City altimeter setting and increase all DA 56 feet and all MDA 60 feet and increase S-ILS 19 all Cats and S-LOC 19 Cats C/D visibility 1/8 mile. VDP NA when using Elizabeth City altimeter setting.

MISSED APPROACH: Climb to 600 then climbing right turn to 2500 on heading 030° and I-EDE localizer N course to IDWAP INT/I-EDE 12 DME and hold.

AWOS-3 118.275	WASHINGTON CENTER 123.85 279.65	UNICOM 123.0 (CTAF) 0
-------------------	------------------------------------	--------------------------



VGSI and ILS glidepath not coincident (VGSI Angle 3.00/TCH 48).

One Minute Holding Pattern

IDWAP INT I-EDE 12

EYUFI INT I-EDE 6

600 2500

hdg 030°

I-EDE N crs

IDWAP INT

\* LOC only.

2500 010° 190°

GS 3.00° TCH 43

1600 1600

6 NM 3.9 NM 1.3 NM

CATEGORY	A	B	C	D
S-ILS 19	220-3/4 200 (200-3/4)			
S-LOC 19	480-1	460 (500-1)	480-1 3/8	460 (500-1 3/8)
CIRCLING	520-1	500 (500-1)	520-1 1/2	580-2 560 (600-2)

