

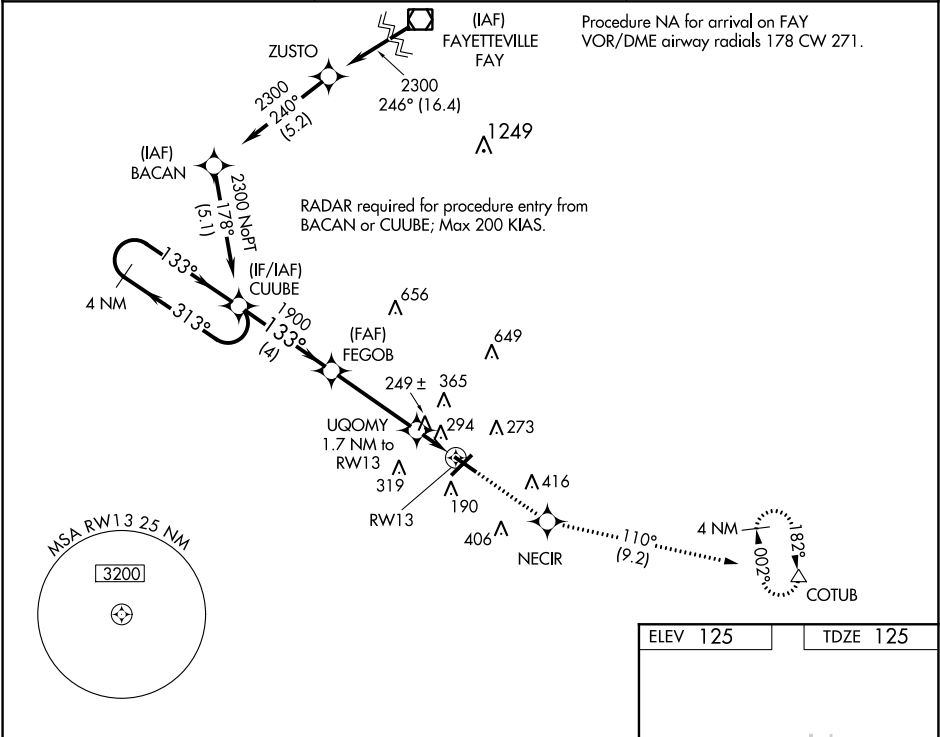
WAAS CH 61221 W13A	APP CRS 133°	Rwy Idg TDZE 125 Apt Elev 125	5003
--	------------------------	---	-------------

RNAV (GPS) RWY 13

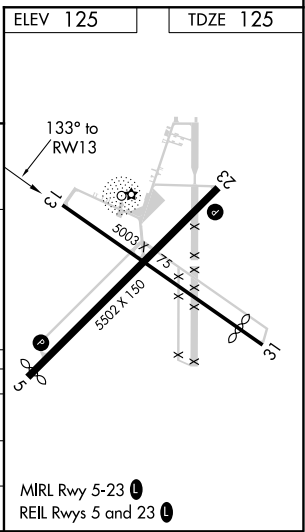
LUMBERTON RGNL (LBT)

<div><div>▼</div><div>▲</div></div> <div>DME/DME RNP-0.3 NA. Helicopter visibility reduction below 1 SM NA. When local altimeter setting not received use Maxton altimeter setting and increase all MDA 60 feet; increase LP Cat C visibility ¼ mile and LNAV Cat C visibility ⅓ mile. Rwy 13 Straight-in and Circling and Circling to Rwy 31 NA at night.</div>	MISSED APPROACH: Climb to 3000 direct NECIR and on track 110° to COTUB and hold.
--	--

ASOS 134.775	FAYETTEVILLE APP CON 133.0 290.25	UNICOM 122.8 (CTAF)
------------------------	---	-------------------------------



	4 NM Holding Pattern	CUUBE	3000	NECIR	tr 110°	COTUB
	2300	313°	133°	1900	133°	UQOMY 1.7 NM to RW13
				700	3.00° TCH 45	
		4 NM	3.7 NM	1.7 NM		
CATEGORY	A	B	C	D		
LP MDA	500-1 375 (400-1)				NA	
LNAV MDA	600-1 475 (500-1)		600-1 475 (500-1)		NA	
CIRCLING	660-1 535 (600-1)		660-1 535 (600-1)		NA	



SE-2, 03 DEC 2020 to 31 DEC 2020

SE-2, 03 DEC 2020 to 31 DEC 2020