

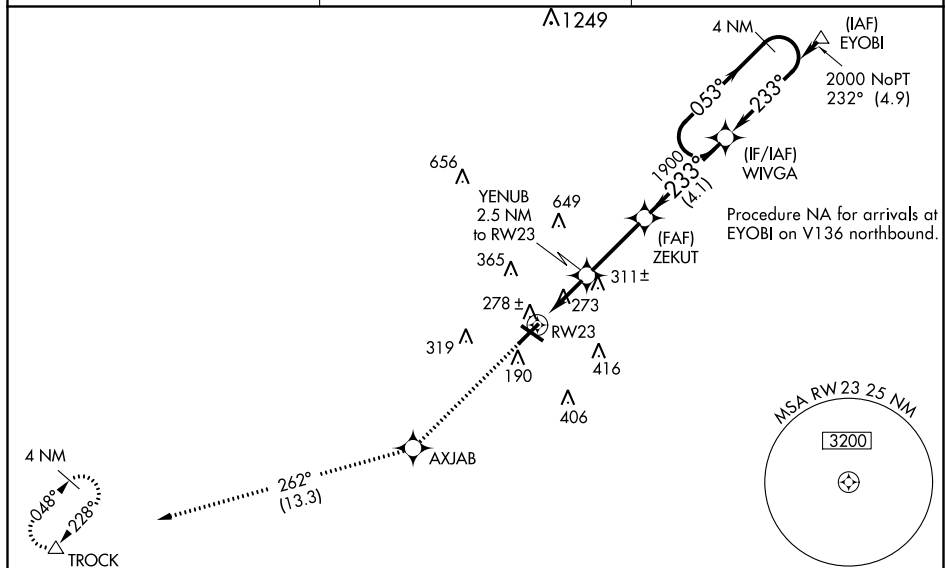
WAAS CH <b>50221</b> <b>W23A</b>	APP CRS <b>233°</b>	Rwy Idg <b>5502</b> TDZE <b>124</b> Apt Elev <b>125</b>
--	------------------------	---

RNAV (GPS) RWY 23  
LUMBERTON RGNL (LBT)

**V** DME/DME RNP-0.3 NA. Helicopter visibility reduction below  $\frac{3}{4}$  SM NA. When local  
**A** altimeter setting not received use Maxton altimeter setting and increase all DA 56 feet  
 and all MDA 60 feet; increase LPV and LNAV/VNAV all Cats visibility  $\frac{1}{4}$  mile. Baro-  
 VNAV and VDP NA with Maxton altimeter setting. Circling to Rwy 13 and 31 NA at  
 night. For uncompensated Baro-VNAV systems, LNAV/VNAV NA below -15°C (5°F)  
 or above 54°C (130°F).

**MISSED APPROACH:** Climb to 2200 direct AXJAB and on track 262° to TROCK and hold.

ASOS <b>134.775</b>	FAYETTEVILLE APP CON <b>133.0 290.25</b>	UNICOM <b>122.8 (CTAF) 0</b>
------------------------	---	---------------------------------



CATEGORY	A	B	C	D
LPV DA	413-7 $\frac{7}{8}$	289 (300-7 $\frac{7}{8}$ )		NA
LNAV/VNAV DA	439-1	315 (400-1)		NA
LNAV MDA	580-1	456 (500-1)	580-1 $\frac{3}{8}$ 456 (500-1 $\frac{1}{2}$ )	NA
CIRCLING	660-1	535 (600-1)	660-1 $\frac{1}{2}$ 535 (600-1 $\frac{1}{2}$ )	NA

SE-2, 03 DEC 2020 to 31 DEC 2020