

WAAS	APP CRS	Rwy Idg	5342
CH 97421	053°	TDZE	124
W05A		Apt Elev	125

RNAV (GPS) RWY 5

LUMBERTON RGNL (LBT)

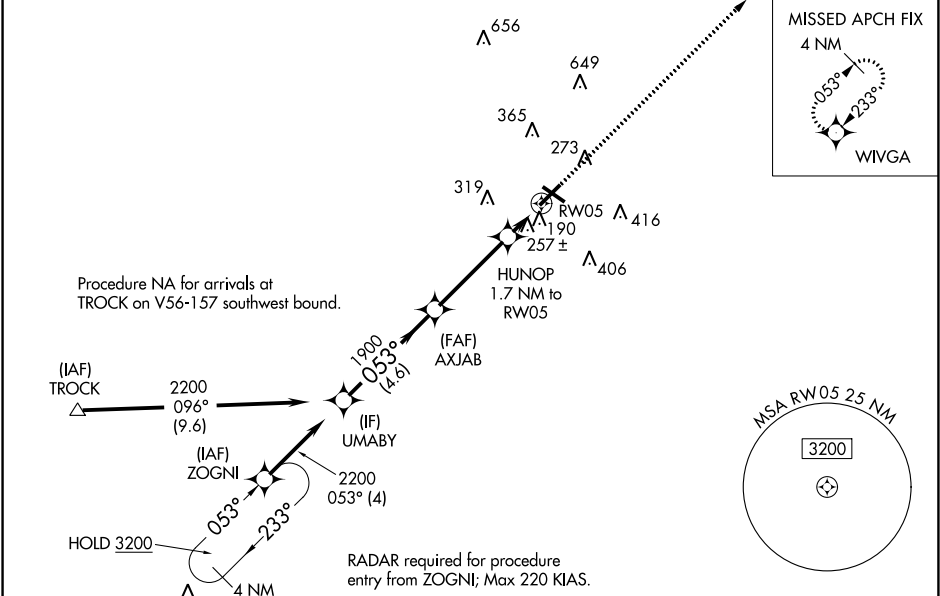
▼

⚠

DME/DME RNP-0.3 NA. When local altimeter setting not received use Maxton altimeter setting and increase all DA 56 feet and all MDA 60 feet; increase LNAV/VNAV all Cats visibility ⅛ mile and LNAV Cat C visibility ¼ mile. Baro-VNAV and VDP NA with Maxton altimeter setting. Circling to Rwy 13 and 31 NA at night. For uncompensated Baro-VNAV systems, LNAV/VNAV NA below -1.5°C (5°F) or above 54°C (130°F).

MISSED APPROACH: Climb to 2000 direct WIVGA and hold.

ASOS 134.775	FAYETTEVILLE APP CON 133.0 290.25	UNICOM 122.8 (CTAF) 0
-----------------	--------------------------------------	--------------------------



ELEV 125

TDZE 124

2000

WIVGA

\* LNAV only.

UMABY

AXJAB

HUNOP 1.7 NM to RW05

\* 1.1 NM to RW05

RW05

2200

1900

720\*

Procedure Turn NA

GP 3.00°

TCH 60

4.6 NM

3.7 NM

0.6

1.1

CATEGORY	A	B	C	D
LPV DA	327-¾	203 (300-¾)		NA
LNAV/VNAV DA	538-1⅜	414 (500-1⅜)		NA
LNAV MDA	520-1	396 (400-1)	520-1⅛ 396 (400-1⅛)	NA
CIRCLING	660-1	535 (600-1)	660-1½ 535 (600-1½)	NA

MIRL Rwy 5-23 0

REIL Rws 5 and 23 0