

RNP APCH.

▼

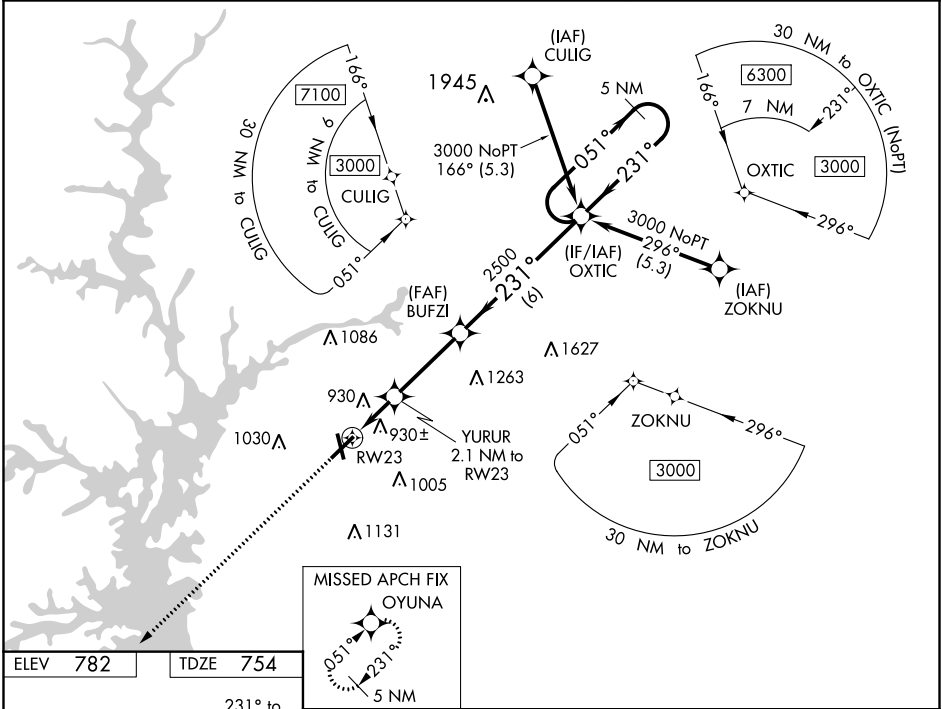
For uncompensated Baro-VNAV systems, LNAV/VNAV NA below -8°C or above 54°C.

▲

Circling Rwy 17, 35 NA at night. Rwy 23 helicopter visibility reduction below ¾ SM NA.

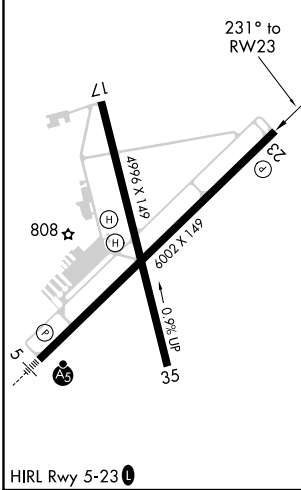
MISSED APPROACH:  
Climb to 2500 direct  
OYUNA and hold.

ASOS <b>120.675</b>	GREER APP CON ★ <b>118.8 270.275</b>	CTAF <b>123.6 0</b>
------------------------	---	------------------------



ELEV **782**

TDZE **754**



MISSED APCH FIX OYUNA 5 NM				
2500 OYUNA				
*LNAV only.				
YURUR 2.1 NM to RW23				
*1.2 NM to RW23				
*1460				
BUFZI 2500				
OXTIC 5 NM Holding Pattern				
051° → 3000 ← 231°				
GP 3.00° TCH 45				
CATEGORY	A	B	C	D
LPV DA	1109-1		355 (400-1)	
LNAV/VNAV DA	1218-1⅓		464 (500-1⅓)	
LNAV MDA	1180-1	426 (400-1)	1180-1¼	426 (400-1¼)
Ⓢ CIRCLING	1260-1 478 (500-1)	1320-1 538 (600-1)	1440-1¾ 658 (700-1¾)	1500-2¼ 718 (800-2¼)