

VORTAC ELW
108.6
Chan **23**

APP CRS
039°

Rwy Idg
TDZE **758**
Apt Elev **782**

6002
758
782

VOR RWY 5
ANDERSON RGNL (A.ND)

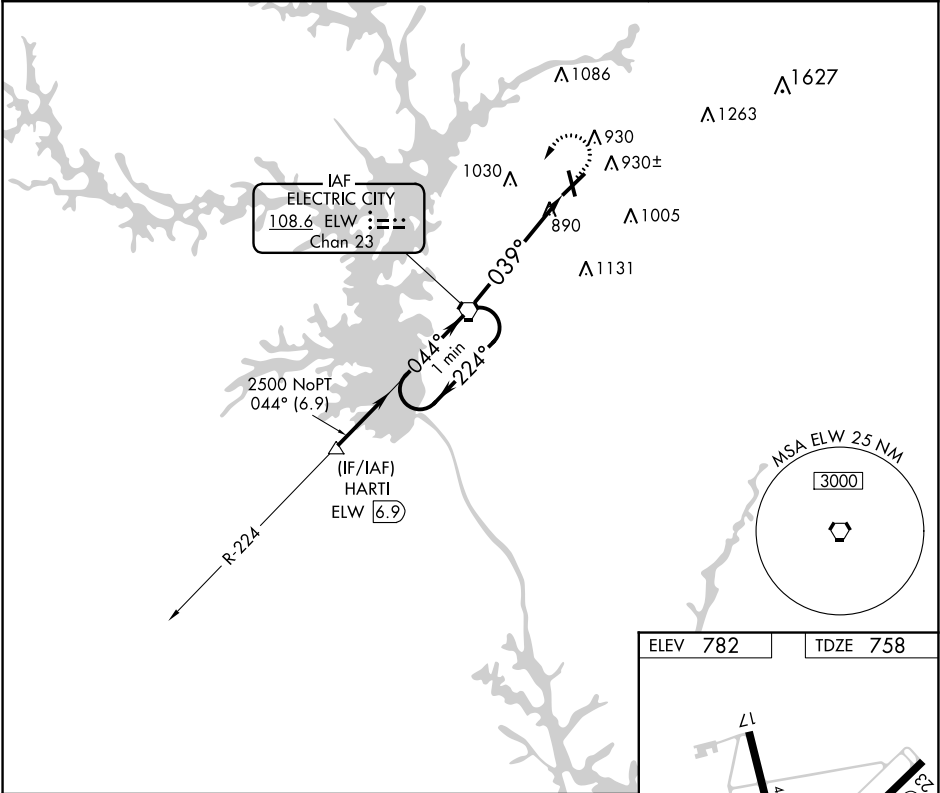
⚠ If local altimeter setting not received, use Clemson altimeter setting and increase all MDAs 60 feet. VDP NA when using Clemson altimeter setting.

⚠ Circling Rwy 17, 35 NA at night. 17, 35 helicopter visibility reduction below 1 SM NA.

MALSR

MISSED APPROACH: Climb to 1600 then climbing left turn to 2500 direct ELW VORTAC and hold.

ASOS 120.675	GREER APP CON ★ 118.8 270.275	CTAF 123.6 0
------------------------	---	------------------------



One Minute Holding Pattern

ELW VORTAC

1600 2500 ELW

2500 ← 224° 044° →

039°

ELW ELW 4.1 5.4

2.98 TCH 49

4.1 NM 1.3

ELEV 782 TDZE 758

CATEGORY	A	B	C	D
S-5	1200-½ 442 (500-½)	1200-¾ 442 (500-¾)	1200-1 442 (500-1)	1200-1 442 (500-1)
CIRCLING	1260-1 478 (500-1)	1320-1 538 (600-1)	1440-1¾ 658 (700-1¾)	1500-2¼ 718 (800-2¼)

Knots	60	90	120	150	180
Min:Seq	5:24	3:36	2:42	2:10	1:48

SE-2, 03 DEC 2020 to 31 DEC 2020

SE-2, 03 DEC 2020 to 31 DEC 2020