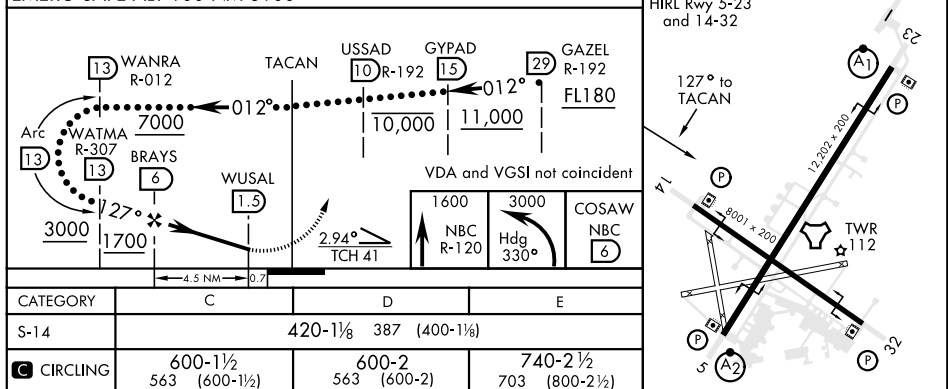
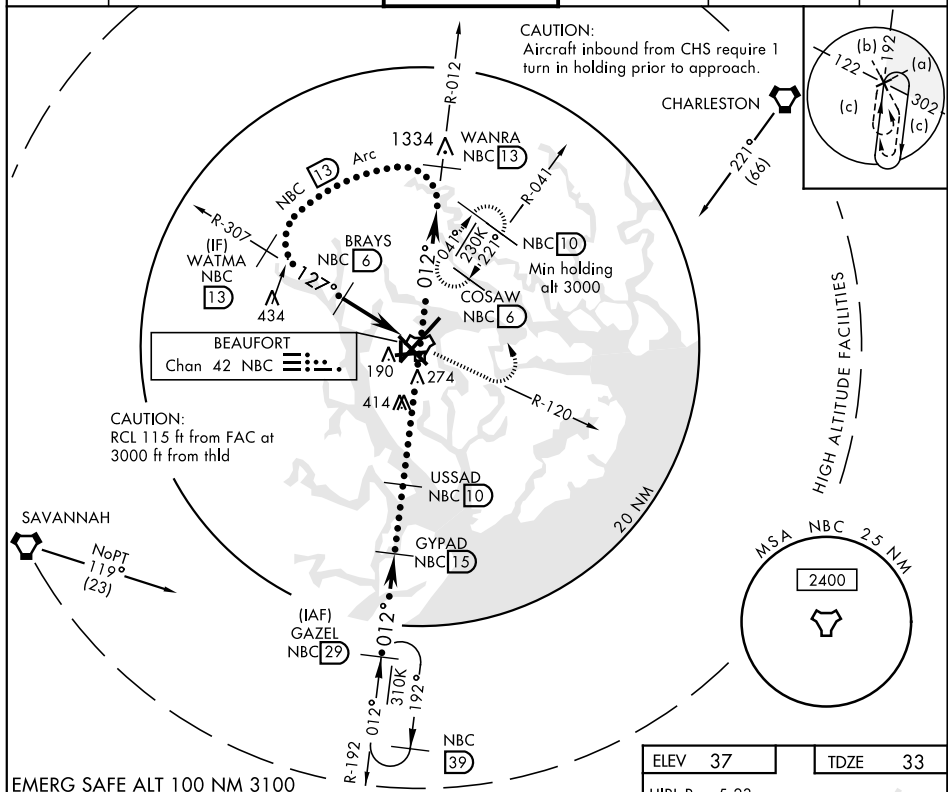


BEAUFORT, SOUTH CAROLINA

## HI-TACAN Y RWY 14

TACAN NBC Chan <b>42</b>	APCH CRS <b>127°</b>	Rwy Idg <b>8001</b> TDZE <b>33</b> Arpt Elev <b>37</b>	JAL-916 [USN]	BEAUFORT MCAS (MERRITT FLD) (KNBC)			
RADAR Required ▼		MISSED APPROACH: Climb to 1600 on NBC TACAN R-120, then climbing left turn to 3000 via hdg 330° to intercept NBC R-041 to 6 DME (COSAW) and hold. Continue climb in hold to 3000.					
ATIS ★ <b>279.525</b>	BEAUFORT APP CON (ABV 3000) <b>125.125 292.125</b> (3000 and BLW) <b>123.7 269.125</b>		BEAUFORT TOWER ★ <b>119.05 342.875</b>		GND CON <b>128.15 348.625</b>	CLNC DEL <b>128.15 254.375</b>	ASR/PAR



BEAUFORT, SOUTH CAROLINA

32° 29'N-80° 43'W

BEAUFORT MCAS (MERRITT FLD) (KNBC)

## HI-TACAN Y RWY 14

Amdt 2 01FEB18

SE-2, 03 DEC 2020 to 31 DEC 2020