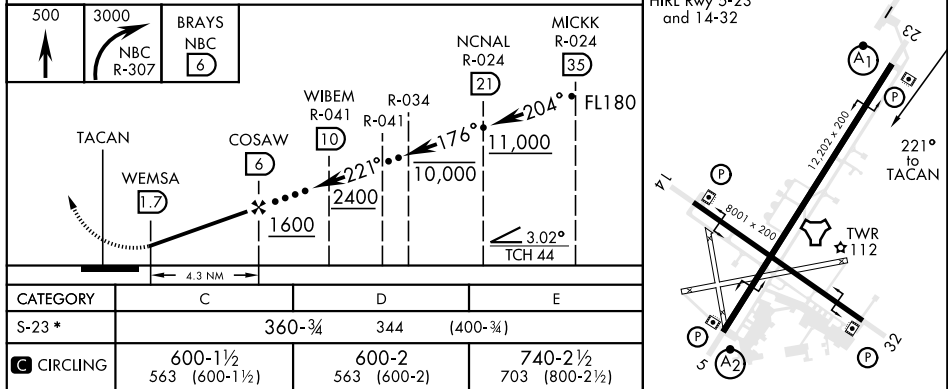
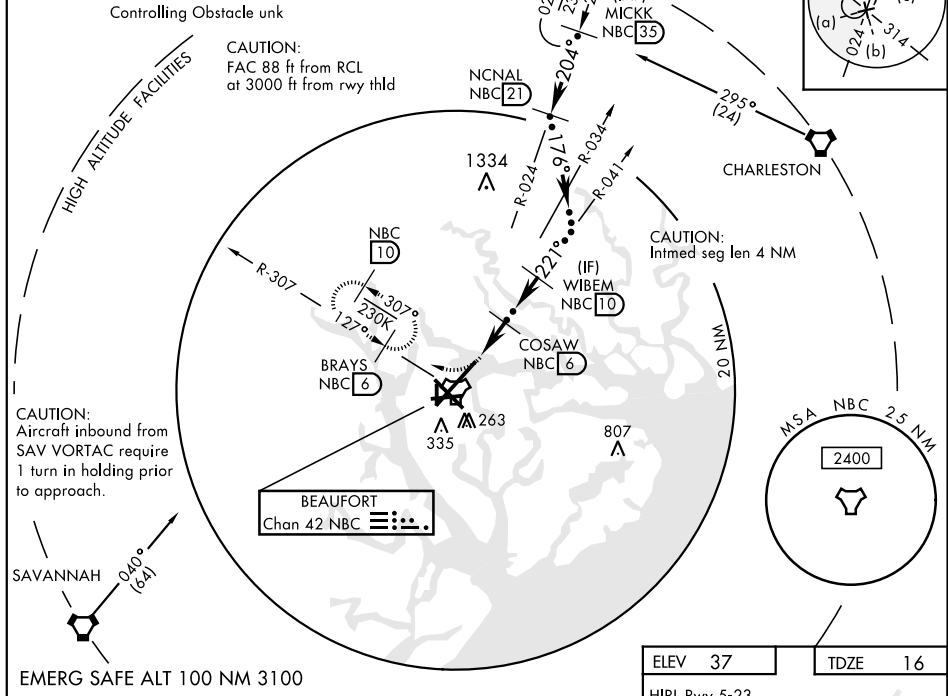


HI-TACAN Z RWY 23

V *When ALS inop, increase vis to 1 mile.		ALSF-1 	† MISSED APPROACH: Climb to 500, then climbing right turn to 3000, intercept NBC TACAN R-307 direct BRAYS and hold.			
ATIS ★ 279.525	BEAUFORT APP CON (ABV 3000) 125.125 292.125 (3000 and BLW) 123.7 269.125	BEAUFORT TOWER ★ 119.05 342.875	GND CON 128.15 348.625	CLNC DEL 128.15 254.375	ASR/PAR	

† CAUTION: Missed Approach Minimum Climb Rate to 3000						
Knots	60	120	180	240	300	360
V/V(fpm)	545	1090	1635	2180	2725	3270



HI-TACAN Z RWY 23