


RNAV (GPS) RWY 23

WAAS Chan 93379 W23A	APCH CRS 227°	Rwy Idg 12,202 TDZE 16 Arpt Elev 37
--	-------------------------	--

AL-916 [USN]

BEAUFORT MCAS (MERRITT FLD) (KNBC)

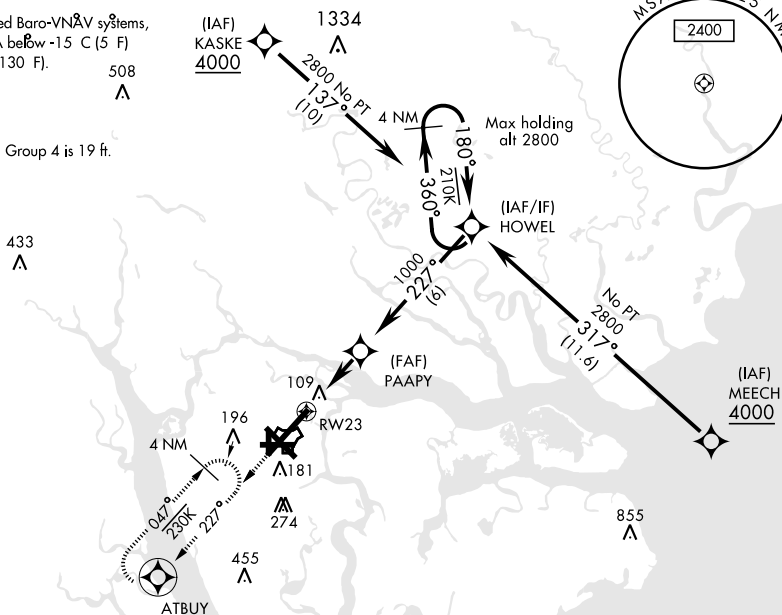
RNP APCH - DME/DME RNP-0.3 NA	 ALSF-I	MISSED APPROACH: Climb to 3000 direct ATBUY and hold. Continue climb in hold to 3000.
RADAR Required.		
▼ *When ALS inop, increase vis CAT ABCD to $\frac{3}{4}$ mile. **When ALS inop, increase vis CAT ABCD to $\frac{1}{2}$ mile.		

ATIS ★ 279.525	BEAUFORT APP CON (ABV 3000) 125.125 292.125 (3000 and BLW) 123.7 269.125	BEAUFORT TOWER ★ 119.05 342.875	GND CON 128.15 348.625	CLNC DEL 128.15 254.375	ASR/ PAR
-------------------	--	------------------------------------	---------------------------	----------------------------	-------------

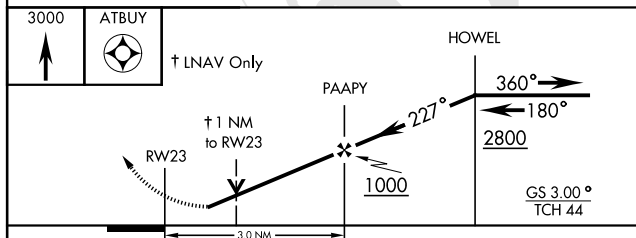
*** When ALS inop, increase vis CAT ABCD to 1 mile.


For uncompensated Baro-VNAV systems, LNAV/VNAV NA below -15 C (5 F) or above 54 C (130 F).

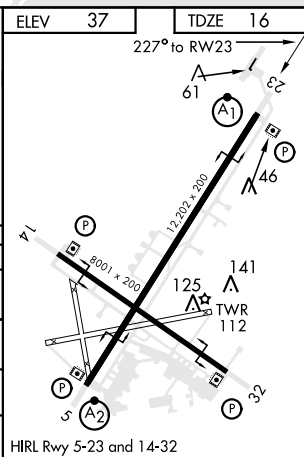
CAUTION: WCH Group 4 is 19 ft.



EMERG SAFE ALT 100 NM 3100



CATEGORY	A	B	C	D
LPV DA *	216-½	200	(200-½)	
LNAV/ VNAV DA **	266-½	250	(300-½)	
*** LNAV MDA	360-½	344 (400-½)	360-¾ 344 (400-¾)	
 CIRCLING	500-1	463 (500-1)	600-1½ 563 (600-1½)	600-2 563 (600-2)



RNAV (GPS) RWY 23