

BEAUFORT, SOUTH CAROLINA

RNAV (GPS) RWY 5

WAAS
Chan **90095**
W05A


APCH CRS
047°

Rwy Idg **12,202**
TDZE **37**
Arpt Elev **37**


AL-916 [USN]

BEAUFORT MCAS (MERRITT FLD) (KNBC)

RNP APCH - DME/DME RNP-0.3 NA

SALSF


MISSED APPROACH: Climb to 3000 direct DUSBE, track 047° to HOWEL and hold. Continue climb in hold to 3000.

RADAR Required.
 * When ALS inop, increase vis to 7/8 mile.

ATIS ★
279.525

BEAUFORT APP CON
125.125 292.125 ABV 3000
123.7 269.125 3000 and BLW

BEAUFORT TOWER ★
119.05 342.875

GND CON
128.15 348.625

CLNC DEL
128.15 254.375

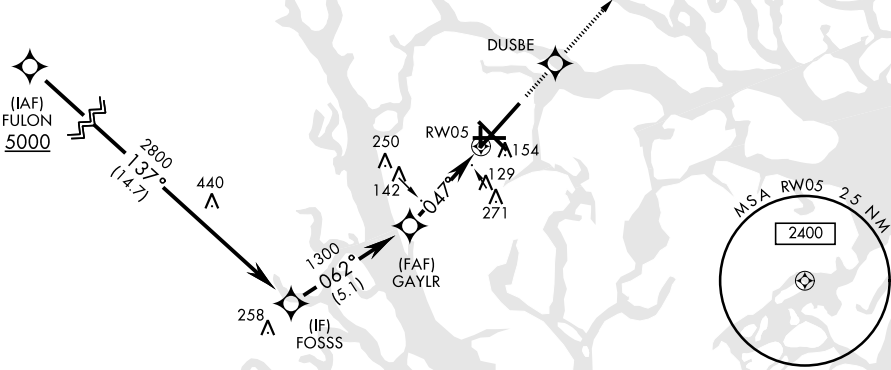
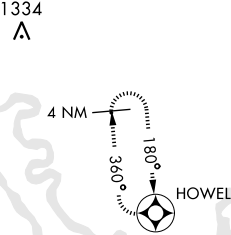
ASR/
PAR

** When ALS inop, increase CAT AB vis to 1 mile,
CAT CD to 1 1/8 miles.

Initial approach segment 230 KIAS Max.
Intmd approach segment 210 KIAS Max.

For uncompensated Baro-VNAV systems,
LNAV/VNAV NA below -15°C (5°F) or
above 54°C (130°F).

CAUTION: Group 3 WCH is 18 ft;
Group 4 is 13 ft.



EMERG SAFE ALT 100 NM 3100

FULON
5000

FOSSS

GAYLR

RW05

DUSBE

HOWEL

GP 3.01°
TCH 38

137°

062°

047°

tr 047°

3000

2800

1300

3.8 NM

1.1 NM to RW05

ELEV 37

TDZE 37

HIRL Rwy 5-23 and 14-32

CATEGORY	A	B	C	D
LPV DA	237-3/4	200	(200-3/4)	
LNAV/ * VNAV DA	296-3/4 259 (300-3/4)	307-3/4 270 (300-3/4)	315-3/4 278 (300-3/4)	326-3/4 289 (300-3/4)
LNAV MDA	440-3/4 403 (500-3/4)		440-1 403 (500-1)	
CIRCLING	500-1 463 (500-1)		600-1 1/2 563 (600-1 1/2)	600-2 563 (600-2)

BEAUFORT, SOUTH CAROLINA

32°29'N-80°43'W

BEAUFORT MCAS (MERRITT FLD) (KNBC)

Amtd 3 23APR20

RNAV (GPS) RWY 5

SE-2, 03 DEC 2020 to 31 DEC 2020

SE-2, 03 DEC 2020 to 31 DEC 2020