

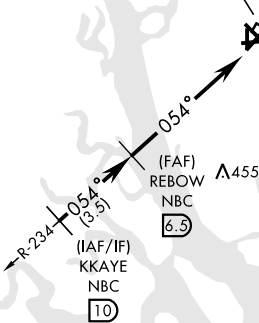
TACAN RWY 5

TACAN NBC Chan 42	APCH CRS 054°	Rwy Idg 12,202 TDZE 37 Arprt Elev 37	AL-916 [USN]	BEAUFORT MCAS (MERRITT FLD) (KNBC)		
RADAR required.			SALSF A2	MISSED APPROACH: Climb to 3000 via NBC R-041 to COSAW and hold. Continue climb in hold to 3000.		
ATIS ★ 279.525	BEAUFORT APP CON (ABV 3000) 125.125 292.125 (3000 and BLW) 123.7 269.125		BEAUFORT TOWER ★ 119.05 342.875	GND CON 128.15 348.625	CLNC DEL 128.15 254.375	ASR/PAR

CAUTION: Intermediate segment length 3.5 NM, recommend early configuration.

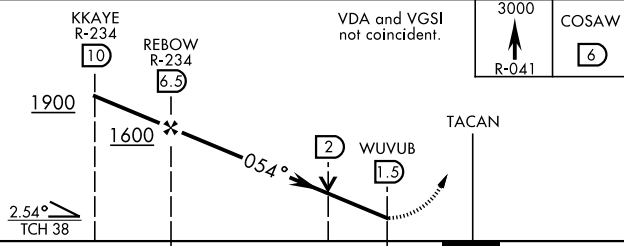
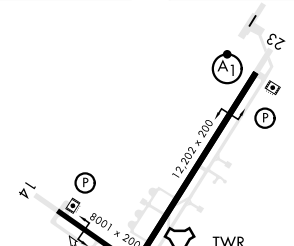
378  
Λ

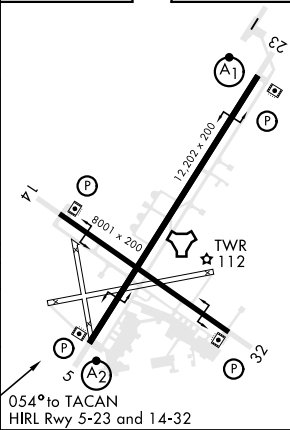
BEAUFORT  
Chan 42 NBC



807  
Λ

EMERG SAFE ALT 100 NM 3100

 <p>KKAYE R-234 10</p> <p>REBOW R-234 6.5</p> <p>1900</p> <p>1600</p> <p>2.54° TCH 38</p> <p>054°</p> <p>WUVUB 1.5</p> <p>5 NM</p> <p>VDA and VGSI not coincident.</p> <p>TACAN</p> <p>3000 R-041</p> <p>COSAW 6</p>			 <p>A1</p> <p>A2</p> <p>A3</p> <p>17,000 x 300</p> <p>054° to TACAN</p> <p>HIRL Rwy 5-23 and 14-32</p> <p>TWR 112</p>		
CATEGORY	A	B	C	D	E
S-5 *	460-¾	423 (500-¾)	460-1	423 (500-1)	
CIRCLING	500-1	463 (500-1)	600-1½ 563 (600-1½)	600-2 563 (600-2)	720-2½ 683 (700-2½)



TACAN RWY 5

SE-2, 03 DEC 2020 to 31 DEC 2020

SE-2, 03 DEC 2020 to 31 DEC 2020