

WAAS
CH **77704**
W23A

APP CRS
230°

Rwy ldg **11500**
TDZE **87**
Apt Elev **93**

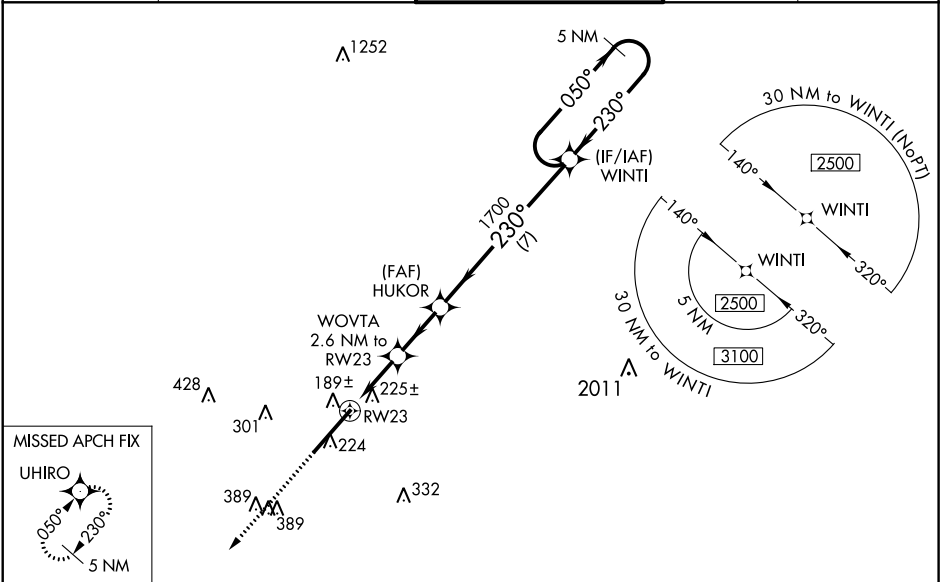
RNAV (GPS) RWY 23

KINSTON RGNL JETPORT AT STALLINGS FIELD (ISO)

Baro-VNAV NA when using Seymour Johnson AFB altimeter setting. For uncompensated Baro-VNAV systems, LNAV/VNAV NA below -15°C (5°F) or above 54°C (130°F). DME/DME RNP-0.3 NA. VDP NA with Seymour Johnson AFB altimeter setting. Rwy 23 helicopter visibility reduction below ¾ SM NA. When local altimeter setting not received, use Seymour Johnson AFB altimeter setting and increase LPV DA to 432, LNAV/VNAV DA to 413, and all MDA 60 feet. Increase LPV all Cats and LNAV Cats C and D visibility ¼ mile, and increase LNAV/VNAV all Cats and Circling Cat D visibility ¼ mile.

MISSED APPROACH:
Climb to 2100 direct UHIRO and hold.

AWOS-3 132.75	SEYMOUR JOHNSON APP CON ★ 127.3 273.6	KINSTON TOWER ★ 120.6 (CTAF) 0 335.55	GND CON 121.9	UNICOM 122.95
-------------------------	---	---	-------------------------	-------------------------



ELEV **93**

TDZE **87**

2100 UHIRO

VGSI and RNAV glidepath not coincident (VGSI Angle 3.00/TCH 100).

5 NM Holding Pattern

*LNAV only.

WOVTA 2.6 NM to RW23

HUKOR 1700

WINTI

050° → 2500

← 230°

GP 3.00° TCH 50

1.2 NM

1.6

2.3

7 NM

CATEGORY

A

B

C

D

LPV DA

390-1

303 (300-1)

LNAV/VNAV DA

437-1½

350 (400-1½)

LNAV MDA

540-1

453 (500-1)

540-1¾

453 (500-1¾)

CIRCLING

580-1

487 (500-1)

700-1¾

607 (700-1¾)

740-2

647 (700-2)

REIL Rwy 23 0

HIRL Rwy 5-23 0