

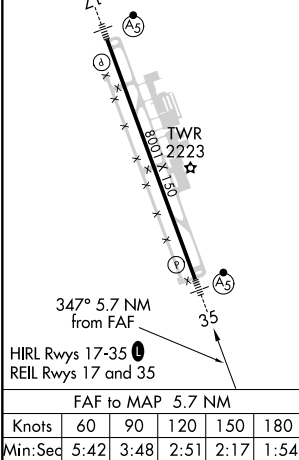
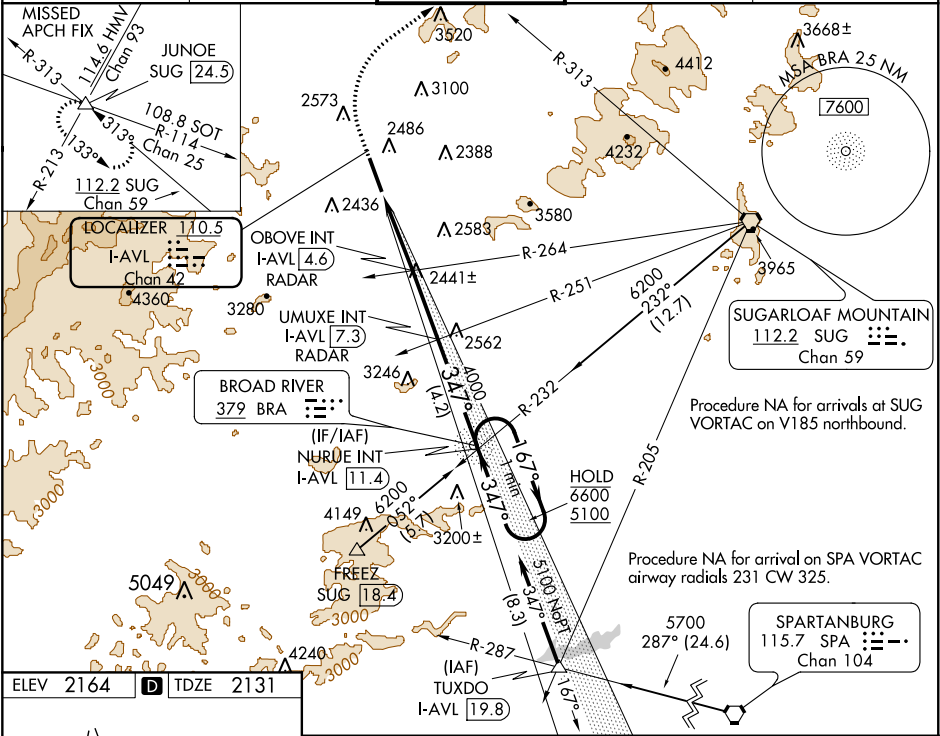
LOC/DME I-AVL	APP CRS	Rwy Idg	7001
110.5	347°	TDZE	2131
Chan 42		Apt Elev	2164

ILS or LOC RWY 35  
ASHEVILLE RGNL (AVL)

**⚠** Circling NA west of Rwy 17-35. For inop ALS, increase S-LOC 35 OBOVE fix minimums Cat C/D visibility to 1 SM.

**MALSR** MISSED APPROACH: Climb to 2700 then climbing right turn to 6800 on heading 020° and SUG VORTAC R-312 to JUNOE INT/SUG 24.5 DME and hold, continue climb-in-hold to 6800.

ATIS 120.2	ASHEVILLE APP CON ★ 124.65 269.575	ASHEVILLE TOWER ★ 121.1 (CTAF) 0 257.8	GND CON 121.9	UNICOM 122.95
---------------	---------------------------------------	---	------------------	------------------



2700	6800	JUNOE	UMUXE INT	NURUE INT	One Minute Holding Pattern
↑	hdg 020°	SUG R-312	I-AVL 7.3 RADAR	I-AVL 11.4	
*LOC only.	OBOVE INT	I-AVL 3.2	I-AVL 4.6 RADAR	347°	167° → 6600 ← 347° 5100
I-AVL 1.5	I-AVL 1.5	I-AVL 1.5	I-AVL 1.5	I-AVL 1.5	GS 3.00° TCH 56
1.7 NM	1.3 NM	2.7 NM	4.2 NM		
CATEGORY	A	B	C	D	
S-ILS 35	2334/24	203 (200-1/2)			
S-LOC 35	3140/40 1009 (1000-3/4)	3140/55 1009 (1000-1)	3140-2 1/2 1009 (1000-2 1/2)		
CIRCLING	3140-1 1/4 976 (1000-1 1/4)	3140-1 1/2 976 (1000-1 1/2)	3460-3 1296 (1300-3)	3720-3 1556 (1600-3)	
OBOVE FIX MINIMUMS (DUAL VOR RECEIVERS OR DME OR RADAR REQUIRED)					
S-LOC 35	2700/24	569 (600-1/2)	2700-1 1/4	569 (600-1 1/4)	
CIRCLING	2800-1 636 (700-1)	2880-1 716 (800-1)	3460-3 1296 (1300-3)	3720-3 1556 (1600-3)	