

APCH CRS	Rwy Idg	4306
093°	TDZE	241
	Arpt Elev	244

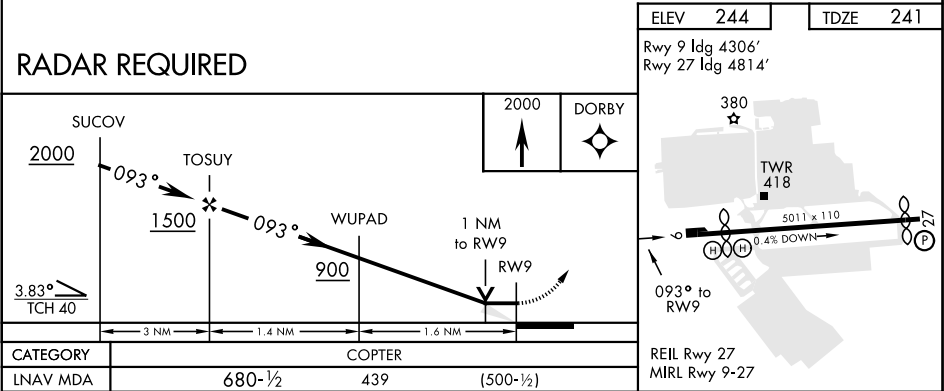
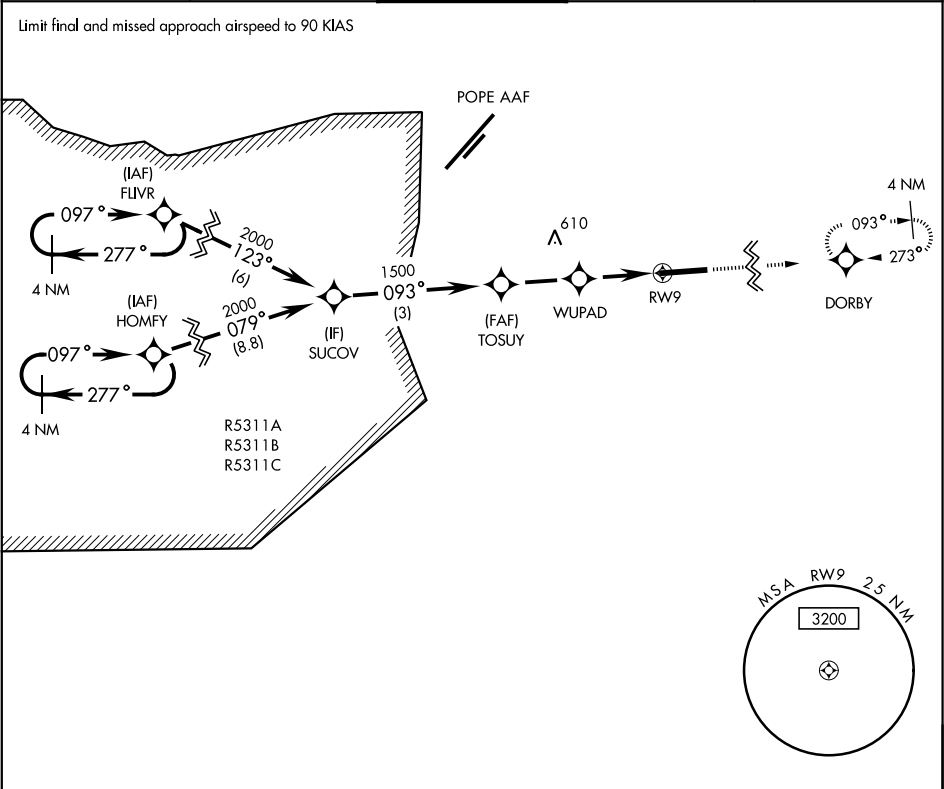
AL-5069 [USA]

SIMMONS AAF (KFBG)

When local altimeter setting not received, use Pope AAF altimeter setting.
DME/DME RNP-0.3 NA

MISSED APPROACH: Climb to 2000 direct DORBY and hold.

ATIS 139.25	FAYETVILLE APP CON 133.0 290.25	SIMMONS TOWER ★ 125.9 240.625	GND CON 121.9 229.4	PAR
----------------	------------------------------------	----------------------------------	------------------------	-----



SE-2, 03 DEC 2020 to 31 DEC 2020

SE-2, 03 DEC 2020 to 31 DEC 2020