

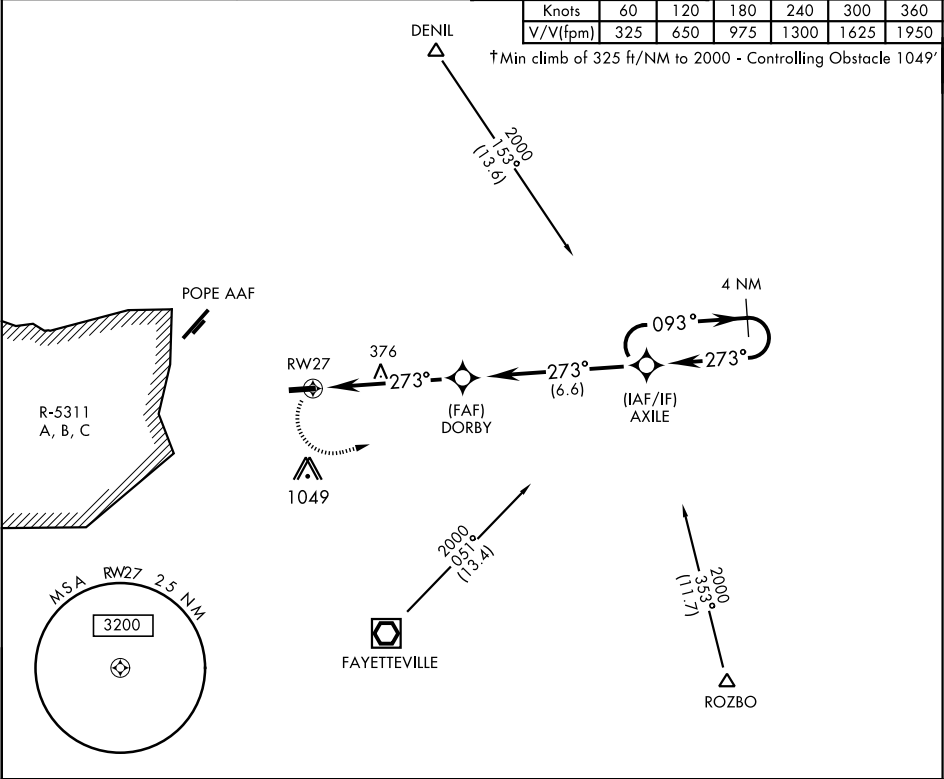
RNAV (GPS) RWY 27

APCH CRS	Rwy Idg	4814
273°	TDZE	228
	Arprt Elev	244

AL-5069 [USA]

SIMMONS AAF (KFBG)

DME/DME RNP-0.3 NA.		† MISSED APPROACH: Climbing left turn to 2100 direct AXILE and hold.	
▼ When local altimeter setting not received, use Pope AAF altimeter setting.			
ATIS 139.25	FAYETTEVILLE APP CON 133.0 290.25	SIMMONS TOWER ★ 125.9 240.625	GND CON 121.9 229.4
		PAR	



ELEV 244

TDZE 228

2100

AXILE

Rwy 9 Idg 4306'

Rwy 27 Idg 4814'

380

☆

TWR 418

5011 × 110

0.4% UP

273° to RW27

27

1.2 NM to RW27

5.4 NM

3.05°

TCH 36

4 NM Holding Pattern

093°

273°

2000

DORBY

AXILE

2000

273°

093°

273°

2000

3.05°

TCH 36

2100

AXILE

MIRL Rwy 9-27

REIL Rwy 27

CATEGORY	A	B	C	D
LNAV MDA	680-1 452 (500-1)	680-1 452 (500-1 1/8)	680-1 452 (500-1 1/8)	NA
CIRCLING	780-1 536 (600-1)	780-1 536 (600-1)	780-1 536 (600-1 1/2)	NA

RNAV (GPS) RWY 27

SE-2, 03 DEC 2020 to 31 DEC 2020

SE-2, 03 DEC 2020 to 31 DEC 2020