

WAAS CH 69227 W32A	APP CRS 321°	Rwy Idg TDZE Apt Elev	3511 10 11
--	------------------------	-----------------------------	---------------------------------------

RNAV (GPS) RWY 32

MICHAEL J SMITH FIELD (MRH)

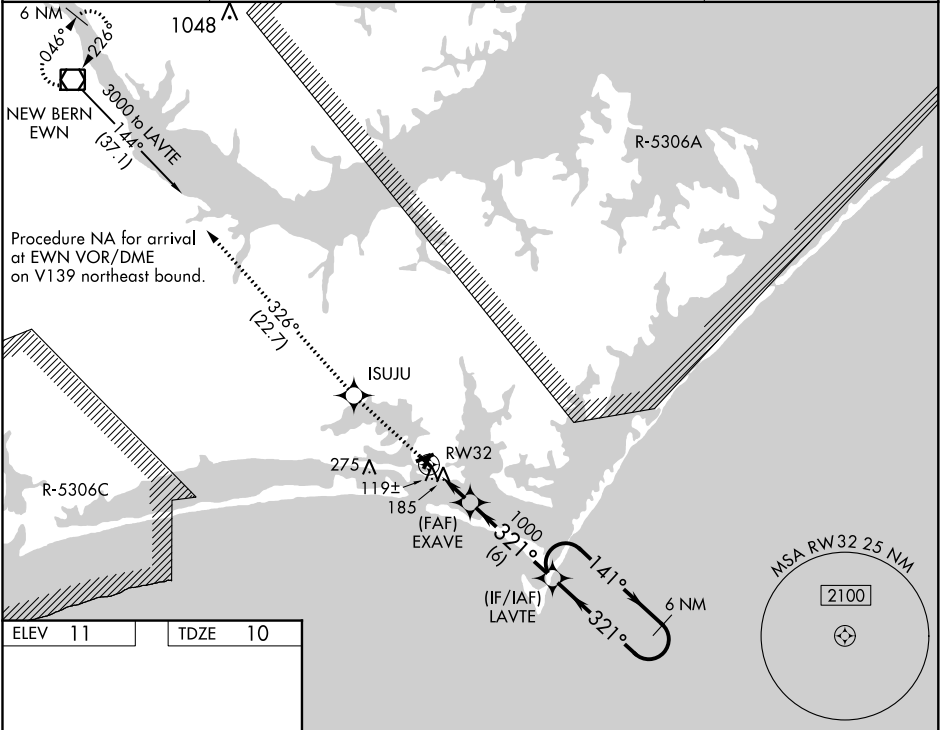
▼

▲

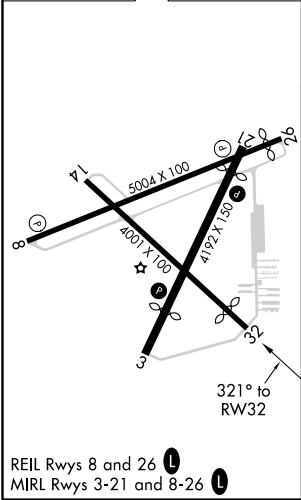
DME/DME RNP-0.3 NA. ATC clearance required to penetrate R-5306A and R-5306C. When local altimeter setting not received, use Cherry Point MCAS altimeter setting and increase all MDA 40 feet; increase LP Cats Cand D visibility ½ mile. Straight-in Rwy 32 NA at night, Circling Rwy 8, 14, 32 NA at night. Rwy 8, 14, 32 helicopter visibility reduction below 1 SM NA.

MISSED APPROACH: Climb to 3000 direct ISUJU and on track 326° to EWN VOR/DME and hold.

ASOS 135.375	CHERRY POINT APP CON 124.1 268.7	CLNC DEL 125.65	UNICOM 122.8 (CTAF) 0
------------------------	--	---------------------------	---------------------------------



ELEV 11	TDZE 10
---------	---------



3000	ISUJU	tr 326°	EWN	LAVTE	6 NM Holding Pattern
CATEGORY	A	B	C	D	
LP MDA	380-1 370 (400-1)				
LNAV MDA	460-1 450 (500-1)		460-1½ 450 (500-1½)		
CIRCLING	540-1 529 (600-1)		540-1½ 529 (600-1½)		620-2 609 (700-2)

SE-2, 03 DEC 2020 to 31 DEC 2020

SE-2, 03 DEC 2020 to 31 DEC 2020