

WAAS CH 42819 W23A	APP CRS 234°	Rwy Idg 5997 TDZE 29 Apt Elev 31
--	------------------------	---

RNAV (GPS) RWY 23

GRAND STRAND (CRE)

⚠

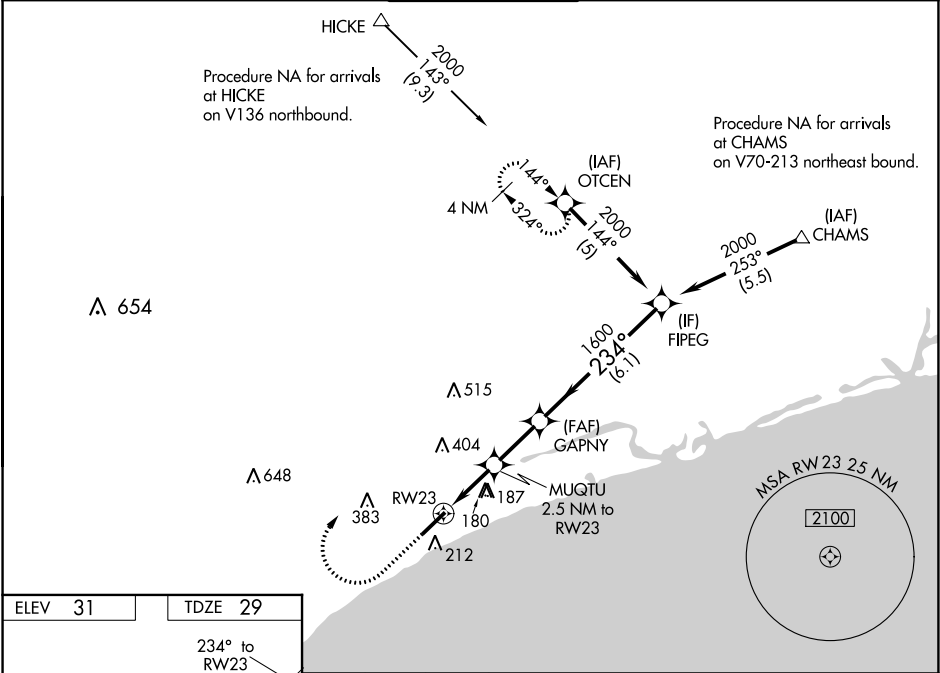
For uncompensated Baro-VNAV systems, LNAV/VNAV NA below -7°C (20°F) or above 54°C (130°F). DME/DME RNP-0.3 NA. VDP and Baro-VNAV NA with Myrtle Beach Intl altimeter setting. When local altimeter setting not received use Myrtle Beach Intl altimeter setting and increase all DA 31 feet and all MDA 40 feet; increase LNAV/VNAV all Cats and LNAV Cat C and D visibility 1/8 mile. For inop MALS when using Myrtle Beach Intl altimeter setting, increase LNAV Cats C and D visibility to 1/8.

MALS

MISSED APPROACH:

Climb to 1000 then climbing right turn to 2000 direct OTCEN and hold.

ATIS 119.625	MYRTLE BEACH APP CON★ 119.2 350.3	STRAND TOWER★ 124.6(CTAF) 257.6	GND CON 121.8 257.6	UNICOM 122.95
------------------------	---	---	-------------------------------	-------------------------



ELEV 31

TDZE 29

234° to RW23

5997 X 100

TWR 107

110

1000

2000

OTCEN

*LNAV only.

MUGTU 2.5 NM to RW23

*1.2 NM to RW23

*880

1600

234°

2000

FIPEG

GP 3.00° TCH 55

CATEGORY	A	B	C	D
LPV DA	229-1/2		200 (200-1/2)	
LNAV/VNAV DA	411-3/4		382 (400-3/4)	
LNAV MDA	480-1/2	451 (500-1/2)	480-7/8	451 (500-7/8)
CIRCLING	520-1	489 (500-1)	520-1 1/2 489 (500-1 1/2)	720-2 1/4 689 (700-2 1/4)