

VORTAC CRE	APP CRS	Rwy Idg	5997
114.4	238°	TDZE	29
Chan 91		Apt Elev	31

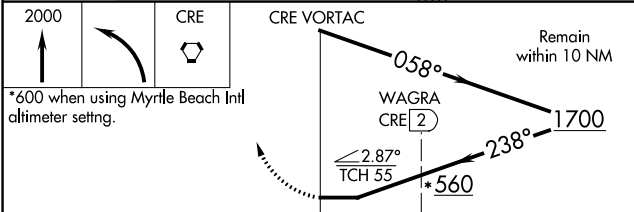
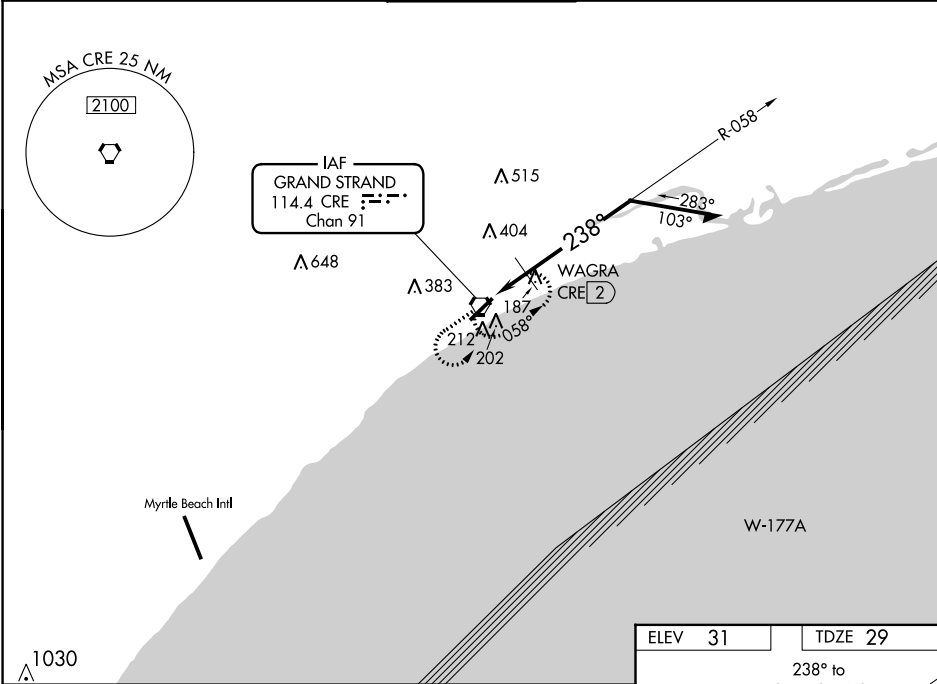
VOR RWY 23  
GRAND STRAND (CRE)

For inoperative MALSR, increase S-23 and S-23 DME minimums Cats A and B visibility to 1 mile. Visibility reduction by helicopters NA. When local altimeter setting not received use Myrtle Beach Intl altimeter setting and increase all MDA 40 feet. For inoperative MALSR when using Myrtle Beach Intl altimeter setting, increase S-23 and S-23 DME minimums Cats A and B visibility to 1 mile.

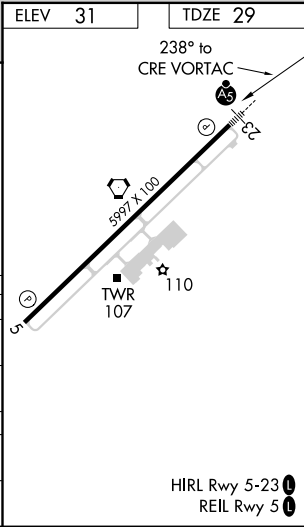


MISSED APPROACH: Climb to 2000 then left turn direct CRE VORTAC and hold.

ATIS 119.625	MYRTLE BEACH APP CON ★ 119.2 350.3	STRAND TOWER ★ 124.6 (CTAF) 257.6	GND CON 121.8 257.6	UNICOM 122.95
-----------------	---------------------------------------	--------------------------------------	------------------------	------------------



CATEGORY	A	B	C	D
S-23	560-¾	531 (600-¾)	560-1 531 (600-1)	560-1¼ 531 (600-1¼)
CIRCLING	560-1	529 (600-1)	560-1½ 529 (600-1½)	720-2¼ 689 (700-2¼)
WAGRA FIX MINIMUMS				
S-23	460-¾	431 (500-¾)		460-1 431 (500-1)
CIRCLING	520-1	489 (500-1)	520-1½ 489 (500-1½)	720-2¼ 689 (700-2¼)



SE-2, 03 DEC 2020 to 31 DEC 2020

SE-2, 03 DEC 2020 to 31 DEC 2020