

LOC/DME I-GSP	APP CRS	Rwy ldg
109.3	038°	11001
Chan 30		TDZE 947
		Apt Elev 964

ILS or LOC RWY 4
GREENVILLE SPARTANBURG INTL (GSP)

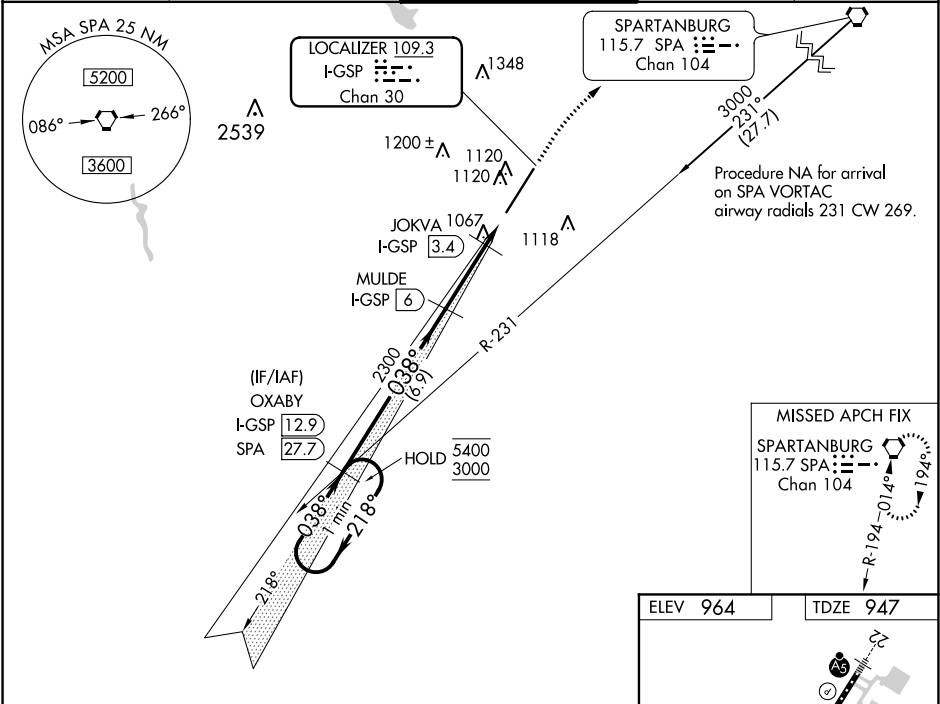
DME required.

For inop ALS, increase S-LOC 4 Cats C and D visibility to RVR 5500. When local altimeter setting not received, use Greenville Downtown altimeter setting: increase DA to 1176 feet; increase all MDAs 40 feet and visibility S-LOC 4 Cat C/D to RVR 4000 and Circling Cat D ¼ SM. For inop ALS, when using Greenville Downtown altimeter setting, increase S-LOC 4 Cats C/D visibility to RVR 6000.

ALS-2

MISSED APPROACH:
Climb to 3000 then right turn direct SPA VORTAC and hold.

ATIS 134.25	GREER APP CON ★ 118.8 270.275	GREER TOWER ★ 120.1(CTAF) 251.15	GND CON 121.9	UNICOM 122.95
-----------------------	---	--	-------------------------	-------------------------



<div>One Minute Holding Pattern</div> <div>5400 ← 218° 3000 → 038°</div> <div>GS 3.00° TCH 55</div>				
<div>OXABY I-GSP 12.9</div> <div>MULDE I-GSP 6</div> <div>JOKVA I-GSP 3.4</div> <div>SPA</div> <div>3000</div> <div>*LOC only.</div> <div>2300</div> <div>*1460</div> <div>6.9 NM</div> <div>2.6 NM</div> <div>1.5 NM</div>				
CATEGORY	A	B	C	D
S-ILS 4	1147/18 200 (200-½)			
S-LOC 4	1320/24	373 (400-½)	1320/35	373 (400-¾)
CIRCLING	1440-1	476 (500-1)	1480-1½ 516 (600-1½)	1700-2¼ 736 (800-2¼)

